

Product datasheet for **TA302181S**

MVP Rabbit Polyclonal Antibody

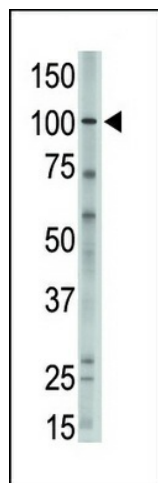
Product data:

Product Type:	Primary Antibodies
Applications:	FC, IHC, WB
Recommended Dilution:	WB: 1:1000, IHC: 1:10~50, FC: 1:10~50
Reactivity:	Human
Host:	Rabbit
Isotype:	Ig
Clonality:	Polyclonal
Immunogen:	This MVP antibody is generated from rabbits immunized with a KLH conjugated synthetic peptide between 863-893 amino acids from the C-terminal region of human MVP.
Formulation:	Purified polyclonal antibody supplied in PBS with 0.09% (W/V) sodium azide.
Concentration:	lot specific
Purification:	This antibody is prepared by Saturated Ammonium Sulfate (SAS) precipitation followed by dialysis against PBS.
Conjugation:	Unconjugated
Storage:	Store at -20°C as received.
Stability:	Stable for 12 months from date of receipt.
Predicted Protein Size:	99327 Da
Gene Name:	major vault protein
Database Link:	NP_059447 Entrez Gene 9961 Human Q14764
Background:	MVP, the major vault protein, is a lung resistance-related protein. Vaults are multi-subunit structures that may be involved in nucleo-cytoplasmic transport. This protein mediates drug resistance, perhaps via a transport process. It is widely distributed in normal tissues, and overexpressed in multidrug-resistant cancer cells. The protein overexpression is a potentially useful marker of clinical drug resistance.
Synonyms:	LRP; VAULT1

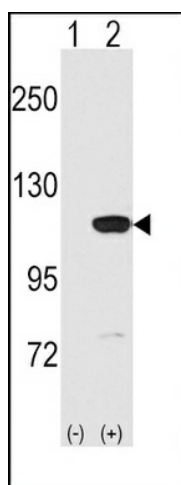
[View online »](#)

Protein Families: Druggable Genome

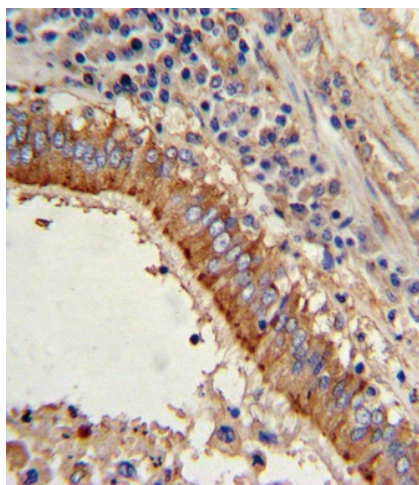
Product images:



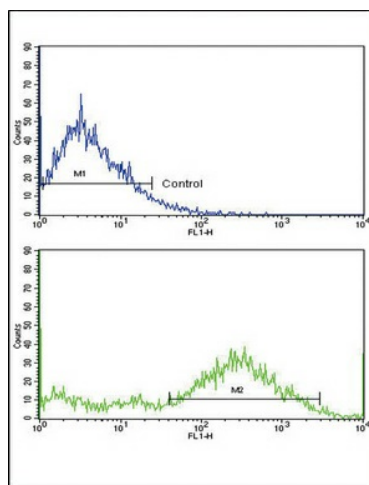
The anti-MVP C-term Antibody (Cat.#[TA302181]) is used in Western blot to detect MVP in A375 lysate.



Western blot analysis of MVP (arrow) using rabbit polyclonal MVP C-term Antibody (Cat.# [TA302181]). 293 cell lysates (2 ug/lane) either nontransfected (Lane 1) or transiently transfected with the MVP gene (Lane 2) (Origene Technologies).



Formalin-fixed and paraffin-embedded human lung carcinoma with MVP Antibody (C-term), which was peroxidase-conjugated to the secondary antibody, followed by DAB staining. This data demonstrates the use of this antibody for immunohistochemistry; clinical relevance has not been evaluated.



Flow cytometric analysis of NCI-H292 cells using MVP Antibody (C-term) (bottom histogram) compared to a negative control cell (top histogram). FITC-conjugated goat-anti-rabbit secondary antibodies were used for the analysis.