

## Product datasheet for **TA302180S**

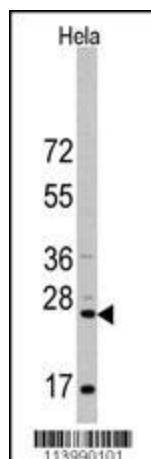
### CD8A Rabbit Polyclonal Antibody

#### Product data:

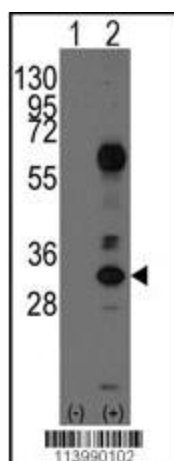
Product Type:	Primary Antibodies
Applications:	IHC, WB
Recommended Dilution:	WB: 1:1000, IHC: 1:10~50
Reactivity:	Human
Host:	Rabbit
Isotype:	Ig
Clonality:	Polyclonal
Immunogen:	This CD8A antibody is generated from rabbits immunized with a KLH conjugated synthetic peptide between 59-88 amino acids from the N-terminal region of human CD8A.
Formulation:	Purified polyclonal antibody supplied in PBS with 0.09% (W/V) sodium azide.
Concentration:	lot specific
Purification:	This antibody is purified through a protein A column, followed by peptide affinity purification.
Conjugation:	Unconjugated
Storage:	Store at -20°C as received.
Stability:	Stable for 12 months from date of receipt.
Predicted Protein Size:	25729 Da
Gene Name:	CD8a molecule
Database Link:	<a href="#">NP_741969</a> <a href="#">Entrez Gene 925 Human</a> <a href="#">P01732</a>
Background:	The CD8 antigen is a cell surface glycoprotein found on most cytotoxic T lymphocytes that mediates efficient cell-cell interactions within the immune system. The CD8 antigen, acting as a coreceptor, and the T-cell receptor on the T lymphocyte recognize antigen displayed by an antigen presenting cell (APC) in the context of class I MHC molecules. The functional coreceptor is either a homodimer composed of two alpha chains, or a heterodimer composed of one alpha and one beta chain. Both alpha and beta chains share significant homology to immunoglobulin variable light chains.
Synonyms:	CD8; Leu2; MAL; p32

[View online »](#)

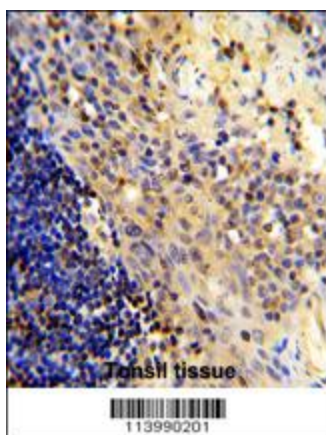
<b>Protein Families:</b>	Adult stem cells, Druggable Genome, ES Cell Differentiation/IPS, Secreted Protein, Transmembrane
<b>Protein Pathways:</b>	Antigen processing and presentation, Cell adhesion molecules (CAMs), Hematopoietic cell lineage, Primary immunodeficiency, T cell receptor signaling pathway

**Product images:**


Western blot analysis of anti-CD8A Antibody (N-term) (Cat.#[TA302180]) in HeLa cell line lysates (35ug/lane). CD8A (arrow) was detected using the purified Pab.



Western blot analysis of CD8A (arrow) using rabbit polyclonal CD8A Antibody (N-term) (Cat.# [TA302180]). 293 cell lysates (2 ug/lane) either nontransfected (Lane 1) or transiently transfected with the CD8A gene (Lane 2) (Origene Technologies).



Formalin-fixed and paraffin-embedded human tonsil tissue reacted with CD8A Antibody (N-term), which was peroxidase-conjugated to the secondary antibody, followed by DAB staining. This data demonstrates the use of this antibody for immunohistochemistry; clinical relevance has not been evaluated.