

Product datasheet for TA302170S

Casein Kinase 2 beta (CSNK2B) Rabbit Polyclonal Antibody

Product data:

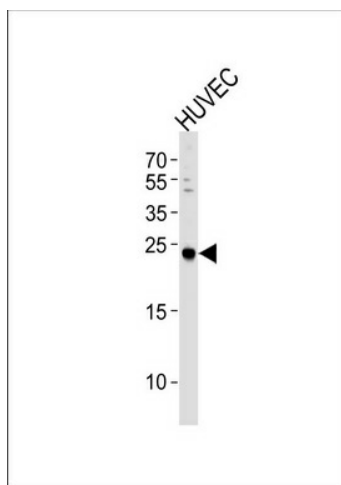
Product Type:	Primary Antibodies
Applications:	WB
Recommended Dilution:	WB: 1:1000
Reactivity:	Human (Predicted: Mouse, Rat, Zebrafish, Bovine, Chicken, Pig, Rabbit, Xenopus)
Host:	Rabbit
Isotype:	Ig
Clonality:	Polyclonal
Immunogen:	This CSNK2B antibody is generated from rabbits immunized with a KLH conjugated synthetic peptide between 153-184 amino acids from the C-terminal region of human CSNK2B.
Formulation:	Purified polyclonal antibody supplied in PBS with 0.09% (W/V) sodium azide.
Concentration:	lot specific
Purification:	This antibody is prepared by Saturated Ammonium Sulfate (SAS) precipitation followed by dialysis against PBS.
Conjugation:	Unconjugated
Storage:	Store at -20°C as received.
Stability:	Stable for 12 months from date of receipt.
Predicted Protein Size:	24942 Da
Gene Name:	casein kinase 2 beta
Database Link:	NP_001311 Entrez Gene 13001 Mouse Entrez Gene 81650 Rat Entrez Gene 1460 Human P67870
Background:	CSNK2B is the beta subunit of casein kinase II, a ubiquitous protein kinase which regulates metabolic pathways, signal transduction, transcription, translation, and replication. The enzyme is composed of three subunits, alpha, alpha prime and beta, which form a tetrameric holoenzyme. The alpha and alpha prime subunits are catalytic, while the beta subunit serves regulatory functions. The enzyme localizes to the endoplasmic reticulum and the Golgi apparatus.
Synonyms:	CK2B; CK2N; CSK2B; G5A


[View online »](#)

Protein Families: Druggable Genome

Protein Pathways: Adherens junction, Tight junction, Wnt signaling pathway

Product images:



Western blot analysis of lysate from HUVEC cell line, using CSNK2B Antibody (Cat. #TA302170). [TA302170] was diluted at 1:1000 at each lane. A goat anti-rabbit IgG H&L (HRP) at 1:5000 dilution was used as the secondary antibody. Lysate at 35ug per lane.