

## Product datasheet for **TA302168S**

### **BCL2L2 Rabbit Polyclonal Antibody**

#### **Product data:**

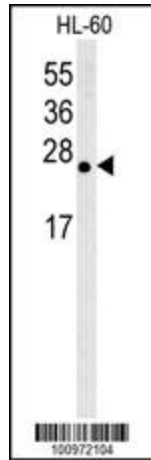
<b>Product Type:</b>	Primary Antibodies
<b>Applications:</b>	IHC, WB
<b>Recommended Dilution:</b>	WB: 1:1000, IHC: 1:50~100
<b>Reactivity:</b>	Human, Mouse (Predicted: Bovine)
<b>Host:</b>	Rabbit
<b>Isotype:</b>	Ig
<b>Clonality:</b>	Polyclonal
<b>Immunogen:</b>	This Bcl antibody is generated from rabbits immunized with a KLH conjugated synthetic peptide between 24-59 amino acids from human Bcl.
<b>Formulation:</b>	Purified polyclonal antibody supplied in PBS with 0.09% (W/V) sodium azide.
<b>Concentration:</b>	lot specific
<b>Purification:</b>	This antibody is prepared by Saturated Ammonium Sulfate (SAS) precipitation followed by dialysis against PBS.
<b>Conjugation:</b>	Unconjugated
<b>Storage:</b>	Store at -20°C as received.
<b>Stability:</b>	Stable for 12 months from date of receipt.
<b>Predicted Protein Size:</b>	20774 Da
<b>Gene Name:</b>	BCL2 like 2
<b>Database Link:</b>	<a href="#">NP_004041</a> <a href="#">Entrez Gene 12050 Mouse</a> <a href="#">Entrez Gene 599 Human</a> <a href="#">Q92843</a>
<b>Background:</b>	Bcl-w is a member of the BCL-2 protein family. The proteins of this family form hetero- or homodimers and act as anti- and pro-apoptotic regulators. Expression of this gene in cells has been shown to contribute to reduced cell apoptosis under cytotoxic conditions. Studies of the related gene in mice indicated a role in the survival of NGF- and BDNF-dependent neurons. Mutation and knockout studies of the mouse gene demonstrated an essential role in adult spermatogenesis.
<b>Synonyms:</b>	BCL-W; BCL2-L-2; BCLW; PPP1R51



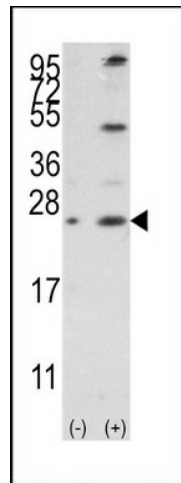
[View online »](#)

Protein Families: Druggable Genome, Transmembrane

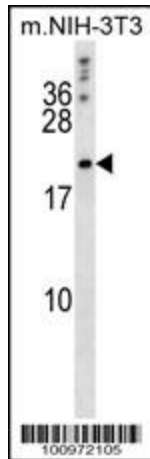
**Product images:**



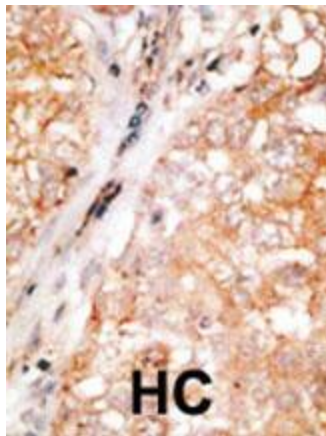
Western blot analysis of anti-Bcl-w BH3 domain Pab (Cat. #[TA302168]) in HL-60 cell lysate. Bcl-w BH3 domain (arrow) was detected using purified Pab. Secondary HRP-anti-rabbit was used for signal visualization with chemiluminescence.



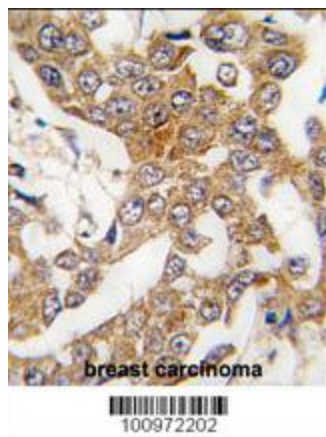
Western blot analysis of Bcl-w3 (arrow) using rabbit polyclonal Bcl-w BH3 Domain Antibody (Cat.#[TA302168]). 293 cell lysates (2 ug/lane) either nontransfected (Lane 1) or transiently transfected with the BCL2L2 gene (Lane 2) (Origene Technologies).



BCLW Antibody (BH3) (RB00972) western blot analysis in mouse NIH-3T3 cell line lysates (35ug/lane). This demonstrates the BCLW antibody detected the BCLW protein (arrow).



Formalin-fixed and paraffin-embedded human cancer tissue reacted with the primary antibody, which was peroxidase-conjugated to the secondary antibody, followed by DAB staining. This data demonstrates the use of this antibody for immunohistochemistry; clinical relevance has not been evaluated. BC = breast carcinoma; HC = hepatocarcinoma.



Formalin-fixed and paraffin-embedded human breast carcinoma tissue reacted with Bcl-w BH3 Domain Antibody (Cat.#[TA302168]), which was peroxidase-conjugated to the secondary antibody, followed by DAB staining. This data demonstrates the use of this antibody for immunohistochemistry; clinical relevance has not been evaluated.