

Product datasheet for **TA302168**

BCL2L2 Rabbit Polyclonal Antibody

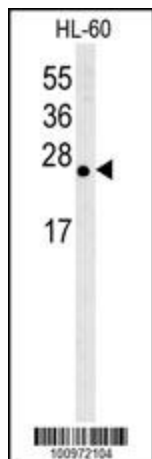
Product data:

Product Type:	Primary Antibodies
Applications:	IHC, WB
Recommended Dilution:	WB: 1:1000, IHC: 1:50~100
Reactivity:	Human, Mouse (Predicted: Bovine)
Host:	Rabbit
Isotype:	Ig
Clonality:	Polyclonal
Immunogen:	This Bcl antibody is generated from rabbits immunized with a KLH conjugated synthetic peptide between 24-59 amino acids from human Bcl.
Formulation:	Purified polyclonal antibody supplied in PBS with 0.09% (W/V) sodium azide.
Concentration:	lot specific
Purification:	This antibody is prepared by Saturated Ammonium Sulfate (SAS) precipitation followed by dialysis against PBS.
Conjugation:	Unconjugated
Storage:	Store at -20°C as received.
Stability:	Stable for 12 months from date of receipt.
Predicted Protein Size:	20774 Da
Gene Name:	BCL2 like 2
Database Link:	NP_004041 Entrez Gene 12050 Mouse Entrez Gene 599 Human Q92843
Background:	Bcl-w is a member of the BCL-2 protein family. The proteins of this family form hetero- or homodimers and act as anti- and pro-apoptotic regulators. Expression of this gene in cells has been shown to contribute to reduced cell apoptosis under cytotoxic conditions. Studies of the related gene in mice indicated a role in the survival of NGF- and BDNF-dependent neurons. Mutation and knockout studies of the mouse gene demonstrated an essential role in adult spermatogenesis.
Synonyms:	BCL-W; BCL2-L-2; BCLW; PPP1R51

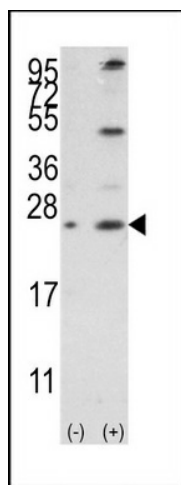
[View online »](#)

Protein Families: Druggable Genome, Transmembrane

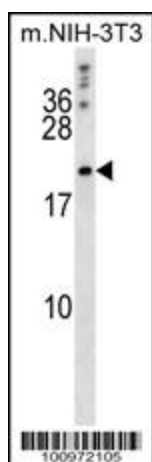
Product images:



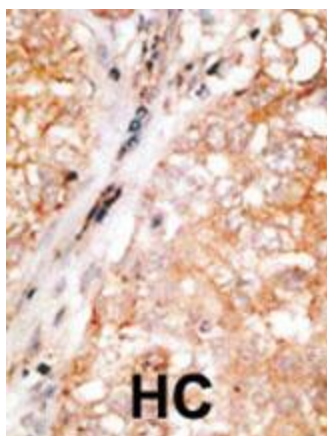
Western blot analysis of anti-Bcl-w BH3 domain Pab (Cat. #TA302168) in HL-60 cell lysate. Bcl-w BH3 domain (arrow) was detected using purified Pab. Secondary HRP-anti-rabbit was used for signal visualization with chemiluminescence.



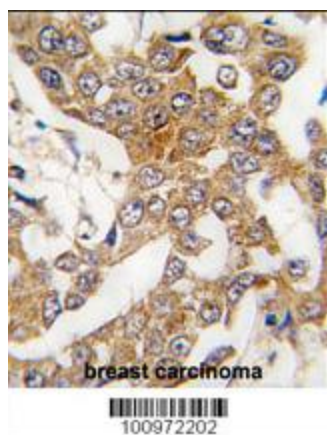
Western blot analysis of Bcl-w3 (arrow) using rabbit polyclonal Bcl-w BH3 Domain Antibody (Cat.#TA302168). 293 cell lysates (2 ug/lane) either nontransfected (Lane 1) or transiently transfected with the BCL2L2 gene (Lane 2) (Origene Technologies).



BCLW Antibody (BH3) (RB00972) western blot analysis in mouse NIH-3T3 cell line lysates (35ug/lane). This demonstrates the BCLW antibody detected the BCLW protein (arrow).



Formalin-fixed and paraffin-embedded human cancer tissue reacted with the primary antibody, which was peroxidase-conjugated to the secondary antibody, followed by DAB staining. This data demonstrates the use of this antibody for immunohistochemistry; clinical relevance has not been evaluated. BC = breast carcinoma; HC = hepatocarcinoma.



Formalin-fixed and paraffin-embedded human breast carcinoma tissue reacted with Bcl-w BH3 Domain Antibody (Cat.#TA302168), which was peroxidase-conjugated to the secondary antibody, followed by DAB staining. This data demonstrates the use of this antibody for immunohistochemistry; clinical relevance has not been evaluated.