

Product datasheet for **TA302167S**

PARP6 Rabbit Polyclonal Antibody

Product data:

Product Type:	Primary Antibodies
Applications:	WB
Recommended Dilution:	WB: 1:1000
Reactivity:	Human (Predicted: Mouse)
Host:	Rabbit
Isotype:	Ig
Clonality:	Polyclonal
Immunogen:	This Parp6 antibody is generated from rabbits immunized with a KLH conjugated synthetic peptide between 508-538 amino acids from the C-terminal region of human Parp6.
Formulation:	Purified polyclonal antibody supplied in PBS with 0.09% (W/V) sodium azide.
Purification:	This antibody is prepared by Saturated Ammonium Sulfate (SAS) precipitation followed by dialysis against PBS.
Conjugation:	Unconjugated
Storage:	Store at -20°C as received.
Stability:	Stable for 12 months from date of receipt.
Predicted Protein Size:	71115 Da
Gene Name:	poly(ADP-ribose) polymerase family member 6
Database Link:	NP_064599 Entrez Gene 67287 Mouse Entrez Gene 56965 Human Q2NL67



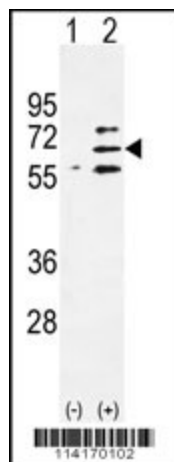
[View online »](#)

Background:

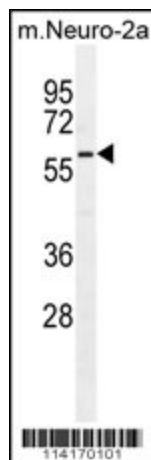
Poly(ADP-ribose)ylation is an immediate DNA-damage-dependent post-translational modification of histones and other nuclear proteins that contributes to the survival of injured proliferating cells. Poly(ADP-ribose) polymerases (PARPs) now constitute a large family of 18 proteins, encoded by different genes and displaying a conserved catalytic domain in which PARP-1 (113 kDa), the founding member, and PARP-2 (62 kDa) are so far the sole enzymes whose catalytic activity has been shown to be immediately stimulated by DNA strand breaks. A large repertoire of sequences encoding novel PARPs now extends considerably the field of poly(ADP-ribose)ylation reactions to various aspects of the cell biology including cell proliferation and cell death. Some of these new members interact with each other, share common partners and common subcellular localizations suggesting possible fine tuning in the regulation of this post-translational modification of proteins.

Synonyms:

ARTD17; PARP-6-B1; PARP-6-C; pART17

Product images:


Western blot analysis of Parp6 (arrow) using rabbit polyclonal Parp6 Antibody (C-term) (Cat. # [TA302167]). 293 cell lysates (2 ug/lane) either nontransfected (Lane 1) or transiently transfected (Lane 2) with the Parp6 gene.



Parp6 Antibody (C-term) (Cat. #[TA302167]) western blot analysis in mouse Neuro-2a cell line lysates (35ug/lane). This demonstrates the Parp6 antibody detected the Parp6 protein (arrow).