

## Product datasheet for **TA302165**

### **B Raf (BRAF) Rabbit Polyclonal Antibody**

#### **Product data:**

<b>Product Type:</b>	Primary Antibodies
<b>Applications:</b>	FC, IF, IHC, WB
<b>Recommended Dilution:</b>	IF: 1:10~50, WB: 1:1000, IHC: 1:10~50, FC: 1:10~50
<b>Reactivity:</b>	Human (Predicted: Mouse, Chicken)
<b>Host:</b>	Rabbit
<b>Isotype:</b>	Ig
<b>Clonality:</b>	Polyclonal
<b>Immunogen:</b>	This B-RAF antibody is generated from rabbits immunized with a KLH conjugated synthetic peptide between 424-453 amino acids from the Central region of human B-RAF.
<b>Formulation:</b>	Purified polyclonal antibody supplied in PBS with 0.09% (W/V) sodium azide.
<b>Concentration:</b>	lot specific
<b>Purification:</b>	This antibody is prepared by Saturated Ammonium Sulfate (SAS) precipitation followed by dialysis against PBS.
<b>Conjugation:</b>	Unconjugated
<b>Storage:</b>	Store at -20°C as received.
<b>Stability:</b>	Stable for 12 months from date of receipt.
<b>Predicted Protein Size:</b>	84437 Da
<b>Gene Name:</b>	B-Raf proto-oncogene, serine/threonine kinase
<b>Database Link:</b>	<a href="#">NP_004324</a> <a href="#">Entrez Gene 109880 Mouse</a> <a href="#">Entrez Gene 673 Human</a> <a href="#">P15056</a>
<b>Background:</b>	BRAF, a member of the RAF subfamily of Ser/Thr protein kinases, is involved in the transduction of mitogenic signals from the cell membrane to the nucleus. It may play a role in the postsynaptic responses of hippocampal neuron. This cytoplasmic protein is expressed in brain and testis. Defects in BRAF are involved in a wide range of cancers including lung cancer and non-Hodgkin lymphoma (NHL). This protein contains 1 zinc-dependent phorbol-ester and DAG binding domain.
<b>Synonyms:</b>	B-raf; B-RAF1; BRAF1; NS7; RAFB1

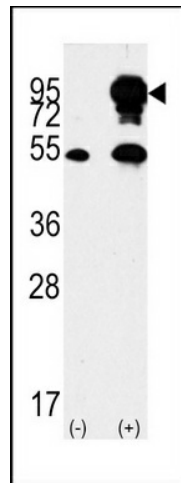


[View online »](#)

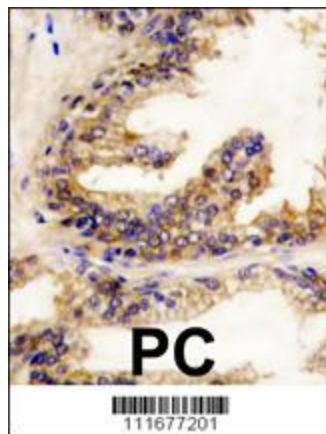
**Protein Families:** Druggable Genome, Protein Kinase

**Protein Pathways:** Acute myeloid leukemia, Bladder cancer, Chemokine signaling pathway, Chronic myeloid leukemia, Colorectal cancer, Endometrial cancer, ErbB signaling pathway, Focal adhesion, Glioma, Insulin signaling pathway, Long-term depression, Long-term potentiation, MAPK signaling pathway, Melanoma, mTOR signaling pathway, Natural killer cell mediated cytotoxicity, Neurotrophin signaling pathway, Non-small cell lung cancer, Pancreatic cancer, Pathways in cancer, Progesterone-mediated oocyte maturation, Prostate cancer, Regulation of actin cytoskeleton, Renal cell carcinoma, Thyroid cancer, Vascular smooth muscle contraction

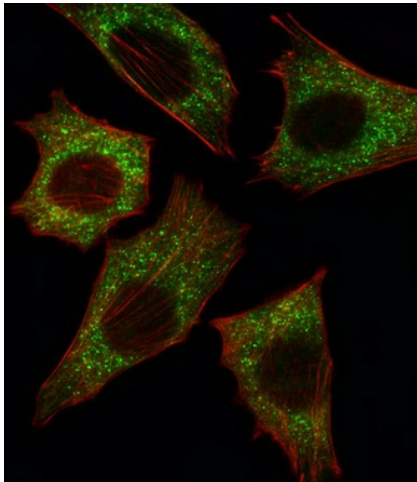
**Product images:**



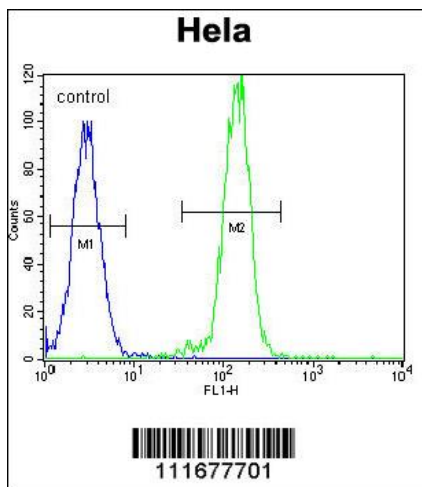
Western blot analysis of BRAF Antibody (Center) polyclonal antibody (Cat.#TA302165) (arrow). 293 cell lysates (2 ug/lane) either nontransfected (Lane 1) or transiently transfected with the BRAF gene (Lane 2) (Origene Technologies).



Formalin-fixed and paraffin-embedded human prostata carcinoma reacted with BRAF Antibody (Center) (Cat.#TA302165), which was peroxidase-conjugated to the secondary antibody, followed by DAB staining. This data demonstrates the use of this antibody for immunohistochemistry; clinical relevance has not been evaluated.



IF image of C2C12 cell stained with BRAF Antibody (Center) (Cat#TA302165). C2C12 cells were incubated with BRAF primary antibody (1:25, 1 h at 37°C). For secondary antibody, Alexa Fluor® 488 conjugated donkey anti-rabbit antibody (green) was used (1:400). Cytoplasmic actin was counterstained with Alexa Fluor® 555 (red) conjugated Phalloidin (7 units/ml). BRAF immunoreactivity is localized to Cytoplasm significantly.



B-RAF Antibody (Center) (Cat. #TA302165) flow cytometric analysis of HeLa cells (right histogram) compared to a negative control cell (left histogram). FITC-conjugated goat-anti-rabbit secondary antibodies were used for the analysis.