

Product datasheet for **TA302164**

GATA4 Rabbit Polyclonal Antibody

Product data:

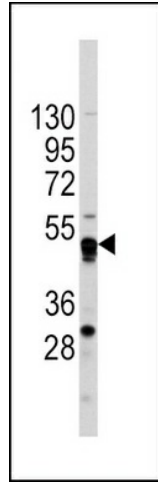
Product Type:	Primary Antibodies
Applications:	FC, WB
Recommended Dilution:	WB: 1:1000, FC: 1:10~50
Reactivity:	Human (Predicted: Mouse, Rat, Xenopus)
Host:	Rabbit
Isotype:	Ig
Clonality:	Polyclonal
Immunogen:	This GATA4 antibody is generated from rabbits immunized with a KLH conjugated synthetic peptide between 298-328 amino acids from the C-terminal region of human GATA4.
Formulation:	Purified polyclonal antibody supplied in PBS with 0.09% (W/V) sodium azide.
Concentration:	lot specific
Purification:	This antibody is prepared by Saturated Ammonium Sulfate (SAS) precipitation followed by dialysis against PBS.
Conjugation:	Unconjugated
Storage:	Store at -20°C as received.
Stability:	Stable for 12 months from date of receipt.
Predicted Protein Size:	44627 Da
Gene Name:	GATA binding protein 4
Database Link:	NP_002043 Entrez Gene 14463 Mouse Entrez Gene 54254 Rat Entrez Gene 2626 Human P43694
Background:	GATA4 is a member of the GATA family of zinc-finger transcription factors. Members of this family recognize the GATA motif which is present in the promoters of many genes. This protein is thought to regulate genes involved in embryogenesis and in myocardial differentiation and function. Mutations in the gene encoding GATA4 have been associated with cardiac septal defects.
Synonyms:	ASD2; TACHD; TOF; VSD1



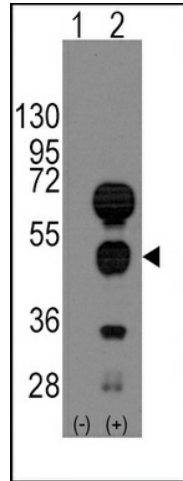
[View online »](#)

Protein Families: Embryonic stem cells, ES Cell Differentiation/IPS, Induced pluripotent stem cells, Transcription Factors

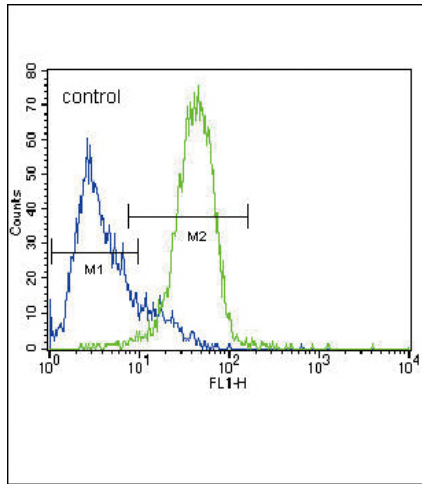
Product images:



Western blot analysis of anti-GATA4 Antibody (C-term) (Cat.#TA302164) in CEM cell line lysates (35ug/lane). GATA4 (arrow) was detected using the purified Pab.



Western blot analysis of GATA4 (arrow) using rabbit polyclonal GATA4 Antibody (C-term) (Cat.#TA302164). 293 cell lysates (2 ug/lane) either nontransfected (Lane 1) or transiently transfected with the GATA4 gene (Lane 2) (Origene Technologies).



GATA4 Antibody (C-term) (Cat. #TA302164) flow cytometric analysis of HepG2 cells (right histogram) compared to a negative control cell (left histogram). FITC-conjugated goat-anti-rabbit secondary antibodies were used for the analysis.