

Product datasheet for **TA302152S**

ATOH1 Rabbit Polyclonal Antibody

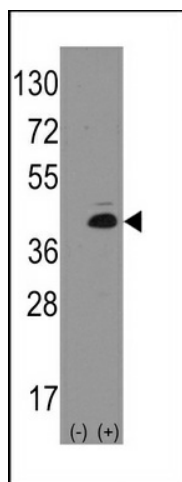
Product data:

Product Type:	Primary Antibodies
Applications:	WB
Recommended Dilution:	WB: 1:1000
Reactivity:	Human
Host:	Rabbit
Isotype:	Ig
Clonality:	Polyclonal
Immunogen:	This MATH1/HATH1/ATOH1 antibody is generated from rabbits immunized with a KLH conjugated synthetic peptide between 78-109 amino acids from the N-terminal region of human MATH1/HATH1/ATOH1.
Formulation:	Purified polyclonal antibody supplied in PBS with 0.09% (W/V) sodium azide.
Purification:	This antibody is purified through a protein A column, followed by peptide affinity purification.
Conjugation:	Unconjugated
Storage:	Store at -20°C as received.
Stability:	Stable for 12 months from date of receipt.
Predicted Protein Size:	38160 Da
Gene Name:	atonal bHLH transcription factor 1
Database Link:	NP_005163 Entrez Gene 474 Human Q92858
Background:	ATOH1 belongs to the basic helix-loop-helix (BHLH) family of transcription factors. It activates E-box dependent transcription along with E47.
Synonyms:	ATH1; bHLHa14; HATH1; MATH-1
Protein Families:	Druggable Genome, Transcription Factors



[View online »](#)

Product images:



Western blot analysis of ATOH1 (arrow) using rabbit polyclonal ATOH1 Antibody (Human N-term) (Cat.#[TA302152]).