

Product datasheet for **TA302151**

ATOH1 Rabbit Polyclonal Antibody

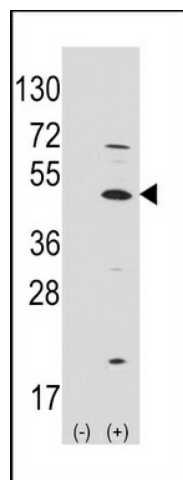
Product data:

| | |
|-------------------------|--|
| Product Type: | Primary Antibodies |
| Applications: | WB |
| Recommended Dilution: | WB: 1:1000 |
| Reactivity: | Human (Predicted: Mouse) |
| Host: | Rabbit |
| Isotype: | Ig |
| Clonality: | Polyclonal |
| Immunogen: | This MATH1/HATH1/ATOH1 antibody is generated from rabbits immunized with a KLH conjugated synthetic peptide between 323-354 amino acids from the C-terminal region of human MATH1/HATH1/ATOH1. |
| Formulation: | Purified polyclonal antibody supplied in PBS with 0.09% (W/V) sodium azide. |
| Concentration: | lot specific |
| Purification: | This antibody is purified through a protein A column, followed by peptide affinity purification. |
| Conjugation: | Unconjugated |
| Storage: | Store at -20°C as received. |
| Stability: | Stable for 12 months from date of receipt. |
| Predicted Protein Size: | 38160 Da |
| Gene Name: | atonal bHLH transcription factor 1 |
| Database Link: | NP_005163 Entrez Gene 11921 Mouse Entrez Gene 474 Human Q92858 |
| Background: | ATOH1 belongs to the basic helix-loop-helix (BHLH) family of transcription factors. It activates E-box dependent transcription along with E47. |
| Synonyms: | ATH1; bHLHa14; HATH1; MATH-1 |
| Protein Families: | Druggable Genome, Transcription Factors |



[View online »](#)

Product images:



Western blot analysis of ATOH1 (arrow) using rabbit polyclonal ATOH1 Antibody (C-term) (Cat.#TA302151).293 cell lysates (2 ug/lane) either nontransfected (Lane 1) or transiently transfected with the ATOH1 gene (Lane 2) (Origene Technologies).