

Product datasheet for **TA302150S**

PPM1F Rabbit Polyclonal Antibody

Product data:

Product Type:	Primary Antibodies
Applications:	IHC, WB
Recommended Dilution:	WB: 1:1000, IHC: 1:50~100
Reactivity:	Human
Host:	Rabbit
Isotype:	Ig
Clonality:	Polyclonal
Immunogen:	This PPM1F antibody is generated from rabbits immunized with a KLH conjugated synthetic peptide between 11-40 amino acids from the N-terminal region of human PPM1F.
Formulation:	Purified polyclonal antibody supplied in PBS with 0.09% (W/V) sodium azide.
Concentration:	lot specific
Purification:	This antibody is prepared by Saturated Ammonium Sulfate (SAS) precipitation followed by dialysis against PBS.
Conjugation:	Unconjugated
Storage:	Store at -20°C as received.
Stability:	Stable for 12 months from date of receipt.
Predicted Protein Size:	49831 Da
Gene Name:	protein phosphatase, Mg ²⁺ /Mn ²⁺ dependent 1F
Database Link:	NP_055449 Entrez Gene 9647 Human P49593



[View online »](#)

Background:

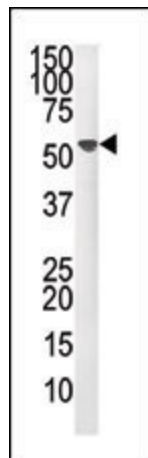
PPM1F is a member of the PP2C family of Ser/Thr protein phosphatases. PP2C family members are known to be negative regulators of cell stress response pathways. This phosphatase can interact with Rho guanine nucleotide exchange factors (PIX), and thus block the effects of p21-activated kinase 1 (PAK), a protein kinase mediating biological effects downstream of Rho GTPases. Calcium/calmodulin-dependent protein kinase II gamma (CAMK2G/CAMK-II) is found to be one of the substrates of this phosphatase. The overexpression of this phosphatase or CAMK2G has been shown to mediate caspase-dependent apoptosis.

Synonyms:

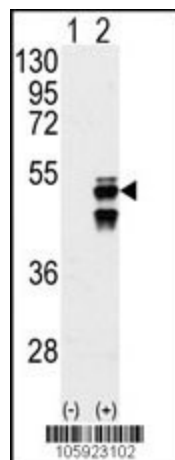
CAMKP; CaMKPase; FEM-2; hFEM-2; POPX2

Protein Families:

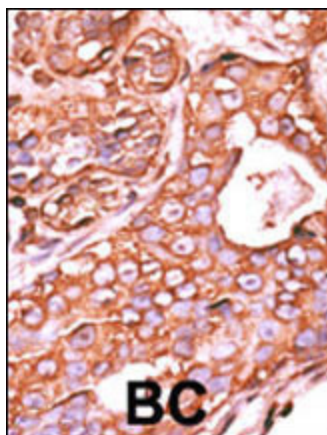
Druggable Genome, Phosphatase

Product images:


Western blot analysis of anti-PPM1F Pab (Cat. # [TA302150]) in mouse liver tissue lysate (35ug/lane). PPM1F (arrow) was detected using the purified Pab.



Western blot analysis of PPM1F (arrow) using PPM1F Antibody (N-term) (Cat.#[TA302150]). 293 cell lysates (2 ug/lane) either nontransfected (Lane 1) or transiently transfected with the PPM1F gene (Lane 2) (Origene Technologies).



Formalin-fixed and paraffin-embedded human cancer tissue reacted with the primary antibody, which was peroxidase-conjugated to the secondary antibody, followed by AEC staining. This data demonstrates the use of this antibody for immunohistochemistry; clinical relevance has not been evaluated. BC = breast carcinoma; HC = hepatocarcinoma.