

Product datasheet for **TA302149**

ASK1 (MAP3K5) Rabbit Polyclonal Antibody

Product data:

Product Type:	Primary Antibodies
Applications:	IHC, WB
Recommended Dilution:	WB: 1:1000, IHC: 1:10~50
Reactivity:	Human
Host:	Rabbit
Isotype:	Ig
Clonality:	Polyclonal
Immunogen:	This ASK1(MEKK5/MAP3K5) antibody is generated from rabbits immunized with a KLH conjugated synthetic peptide between 61-90 amino acids from human ASK1(MEKK5/MAP3K5).
Formulation:	Purified polyclonal antibody supplied in PBS with 0.09% (W/V) sodium azide.
Concentration:	lot specific
Purification:	This antibody is purified through a protein A column, followed by peptide affinity purification.
Conjugation:	Unconjugated
Storage:	Store at -20°C as received.
Stability:	Stable for 12 months from date of receipt.
Predicted Protein Size:	154537 Da
Gene Name:	mitogen-activated protein kinase kinase kinase 5
Database Link:	NP_005914 Entrez Gene 4217 Human Q99683



[View online »](#)

Background:

Mitogen-activated protein kinase (MAPK) signaling cascades include MAPK or extracellular signal-regulated kinase (ERK), MAPK kinase (MKK or MEK), and MAPK kinase kinase (MAPKKK or MEKK). MAPKK kinase/MEKK phosphorylates and activates its downstream protein kinase, MAPK kinase/MEK, which in turn activates MAPK. The kinases of these signaling cascades are highly conserved, and homologs exist in yeast, *Drosophila*, and mammalian cells. MAPKKK5 contains 1,374 amino acids with all 11 kinase subdomains. Northern blot analysis shows that MAPKKK5 transcript is abundantly expressed in human heart and pancreas. The MAPKKK5 protein phosphorylates and activates MKK4 (aliases SERK1, MAPKK4) *in vitro*, and activates c-Jun N-terminal kinase (JNK)/stress-activated protein kinase (SAPK) during transient expression in COS and 293 cells; MAPKKK5 does not activate MAPK/ERK.

Synonyms:

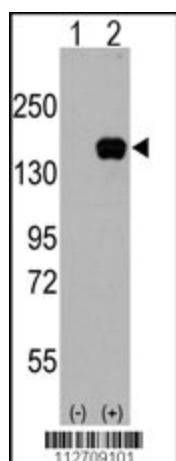
ASK1; MAPKKK5; MEKK5

Protein Families:

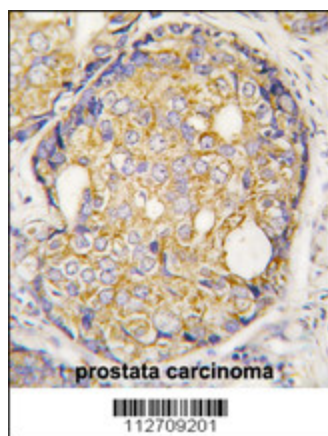
Druggable Genome, Protein Kinase

Protein Pathways:

Amyotrophic lateral sclerosis (ALS), MAPK signaling pathway, Neurotrophin signaling pathway

Product images:


Western blot analysis of MAP3K5 (arrow) using rabbit polyclonal MAP3K5 Antibody (Cat.#TA302149). 293 cell lysates (2 ug/lane) either nontransfected (Lane 1) or transiently transfected with the MAP3K5 gene (Lane 2) (Origene Technologies).



Formalin-fixed and paraffin-embedded human prostate carcinoma tissue reacted with MAP3K5 Antibody (S83) (Cat.#TA302149), which was peroxidase-conjugated to the secondary antibody, followed by DAB staining. This data demonstrates the use of this antibody for immunohistochemistry; clinical relevance has not been evaluated.