

Product datasheet for **TA302136**

RAC1 Rabbit Polyclonal Antibody

Product data:

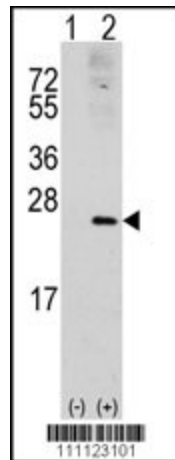
| | |
|-------------------------|---|
| Product Type: | Primary Antibodies |
| Applications: | WB |
| Recommended Dilution: | WB: 1:1000 |
| Reactivity: | Human (Predicted: Mouse, Rat, Bovine, Chicken, Drosophila, Pig, Monkey, C. elegans) |
| Host: | Rabbit |
| Isotype: | Ig |
| Clonality: | Polyclonal |
| Immunogen: | This RAC1 antibody is generated from rabbits immunized with a KLH conjugated synthetic peptide between 49-78 amino acids from human RAC1. |
| Formulation: | Purified polyclonal antibody supplied in PBS with 0.09% (W/V) sodium azide. |
| Concentration: | lot specific |
| Purification: | This antibody is purified through a protein A column, followed by peptide affinity purification. |
| Conjugation: | Unconjugated |
| Storage: | Store at -20°C as received. |
| Stability: | Stable for 12 months from date of receipt. |
| Predicted Protein Size: | 21450 Da |
| Gene Name: | ras-related C3 botulinum toxin substrate 1 (rho family, small GTP binding protein Rac1) |
| Database Link: | NP_008839 Entrez Gene 19353 MouseEntrez Gene 363875 RatEntrez Gene 717755 MonkeyEntrez Gene 5879 Human P63000 |
| Background: | RAC1 is a GTPase belonging to the RAS superfamily of small GTP-binding proteins. It is a pleiotropic regulator of many cellular processes, including the cell cycle, cell-cell adhesion, motility (through the actin network), and of epithelial differentiation (proposed to be necessary for maintaining epidermal stem cells). |
| Synonyms: | MIG5; p21-Rac1; Rac-1; TC-25 |
| Protein Families: | Druggable Genome |



[View online »](#)

Protein Pathways:

Adherens junction, Amyotrophic lateral sclerosis (ALS), Axon guidance, B cell receptor signaling pathway, Chemokine signaling pathway, Colorectal cancer, Epithelial cell signaling in Helicobacter pylori infection, Fc epsilon RI signaling pathway, Fc gamma R-mediated phagocytosis, Focal adhesion, Leukocyte transendothelial migration, MAPK signaling pathway, Natural killer cell mediated cytotoxicity, Neurotrophin signaling pathway, Pancreatic cancer, Pathways in cancer, Regulation of actin cytoskeleton, Renal cell carcinoma, Toll-like receptor signaling pathway, VEGF signaling pathway, Viral myocarditis, Wnt signaling pathway

Product images:

Western blot analysis of RAC1 (arrow) using rabbit polyclonal RAC1 Antibody (S71) (Cat.#TA302136).293 cell lysates (2 ug/lane) either nontransfected (Lane 1) or transiently transfected with the RAC1 gene (Lane 2) (Origene Technologies).