

## Product datasheet for **TA302132**

### TRAF2 Rabbit Polyclonal Antibody

#### Product data:

Product Type:	Primary Antibodies
Applications:	IHC, WB
Recommended Dilution:	WB: 1:1000, IHC: 1:10~50
Reactivity:	Human
Host:	Rabbit
Isotype:	Ig
Clonality:	Polyclonal
Immunogen:	This TRAF2 antibody is generated from rabbits immunized with a KLH conjugated synthetic peptide between 343-372 amino acids from the C-terminal region of human TRAF2.
Formulation:	Purified polyclonal antibody supplied in PBS with 0.09% (W/V) sodium azide.
Concentration:	lot specific
Purification:	This antibody is prepared by Saturated Ammonium Sulfate (SAS) precipitation followed by dialysis against PBS.
Conjugation:	Unconjugated
Storage:	Store at -20°C as received.
Stability:	Stable for 12 months from date of receipt.
Predicted Protein Size:	55729 Da
Gene Name:	TNF receptor associated factor 2
Database Link:	<a href="#">NP_066961</a> <a href="#">Entrez Gene 7186 Human</a> <a href="#">Q12933</a>



[View online »](#)

**Background:**

TRAF2 is a member of the TNF receptor associated factor (TRAF) protein family. TRAF proteins associate with, and mediate the signal transduction from members of the TNF receptor superfamily. This protein directly interacts with TNF receptors, and forms a heterodimeric complex with TRAF1. This protein is required for TNF-alpha-mediated activation of MAPK8/JNK and NF-kappaB. The protein complex formed by this protein and TRAF1 interacts with the inhibitor-of-apoptosis proteins (IAPs), and functions as a mediator of the anti-apoptotic signals from TNF receptors. The interaction of this protein with TRADD, a TNF receptor associated apoptotic signal transducer, ensures the recruitment of IAPs for the direct inhibition of caspase activation. BIRC2/c-IAP1, an apoptosis inhibitor possessing ubiquitin ligase activity, can ubiquitinate and induce the degradation of this protein, and thus potentiate TNF-induced apoptosis.

**Synonyms:**

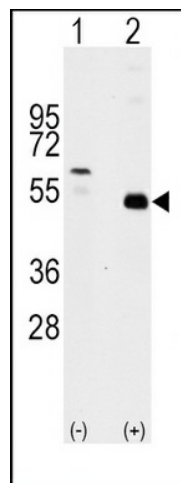
MGC:45012; TRAP; TRAP3

**Protein Families:**

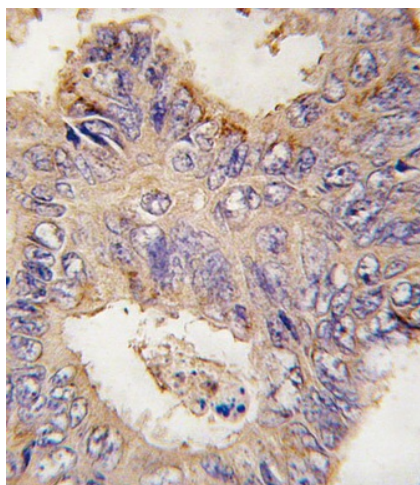
Druggable Genome

**Protein Pathways:**

Adipocytokine signaling pathway, Apoptosis, MAPK signaling pathway, Pathways in cancer, RIG-I-like receptor signaling pathway, Small cell lung cancer

**Product images:**

Western blot analysis of TRAF2 (arrow) using rabbit polyclonal TRAF2 Antibody (C-term) (Cat.#TA302132). 293 cell lysates (2 ug/lane) either nontransfected (c) or transiently transfected with the TRAF2 gene (Lane 2) (Origene Technologies).



Formalin-fixed and paraffin-embedded human colon carcinoma tissue reacted with TRAF2 antibody (C-term) (Cat.#TA302132), which was peroxidase-conjugated to the secondary antibody, followed by DAB staining. This data demonstrates the use of this antibody for immunohistochemistry; clinical relevance has not been evaluated.