

## Product datasheet for **TA302128S**

### CaMKI gamma (CAMK1G) Rabbit Polyclonal Antibody

#### Product data:

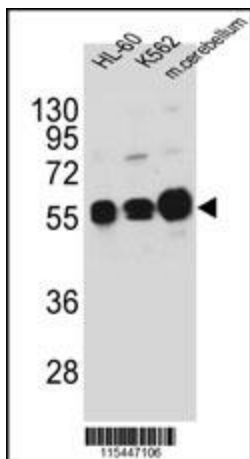
Product Type:	Primary Antibodies
Applications:	IHC, WB
Recommended Dilution:	WB: 1:1000, IHC: 1:10~50
Reactivity:	Human (Predicted: Mouse, Rat)
Host:	Rabbit
Isotype:	Ig
Clonality:	Polyclonal
Immunogen:	This CAMK1G antibody is generated from rabbits immunized with a KLH conjugated synthetic peptide between 211-241 amino acids from the Central region of human CAMK1G.
Formulation:	Purified polyclonal antibody supplied in PBS with 0.09% (W/V) sodium azide.
Concentration:	lot specific
Purification:	This antibody is prepared by Saturated Ammonium Sulfate (SAS) precipitation followed by dialysis against PBS.
Conjugation:	Unconjugated
Storage:	Store at -20°C as received.
Stability:	Stable for 12 months from date of receipt.
Predicted Protein Size:	53128 Da
Gene Name:	calcium/calmodulin dependent protein kinase IG
Database Link:	<a href="#">NP_065172</a> <a href="#">Entrez Gene 171358 Rat</a> <a href="#">Entrez Gene 215303 Mouse</a> <a href="#">Entrez Gene 57172 Human</a> <a href="#">Q96NX5</a>
Background:	Ca <sup>2+</sup> /calmodulin-dependent protein kinase I (CaMKI) constitutes a family of closely related isoforms (alpha, beta and gamma). CLICK-III/CaMKIgamma is a novel membrane-anchored neuronal Ca <sup>2+</sup> /calmodulin-dependent protein kinase. AMKlgamma is abundant in neurons, particularly in the amygdala and ventromedial hypothalamus. Like the other CaMKI isoforms, full activation of CLICK-III/CaMKIgamma requires both Ca(2+)/CaM and phosphorylation by CaMKK.
Synonyms:	CLICK3; CLICKIII; dj272L16.1; VWS1



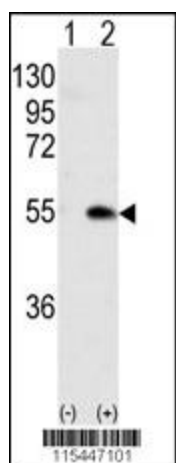
[View online »](#)

Protein Families: Druggable Genome, Protein Kinase

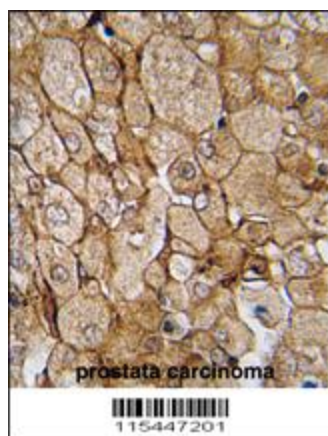
**Product images:**



CAMK1G Antibody (Center K226) (Cat.# [TA302128]) western blot analysis in HL-60, K562 cell line and mouse cerebellum tissue lysates (35ug/lane). This demonstrates the CAMK1G antibody detected the CAMK1G protein (arrow).



Western blot analysis of CAMK1G (arrow) using rabbit polyclonal CAMK1G (Center K226) Antibody (Cat.#[TA302128]). 293 cell lysates (2 ug/lane) either nontransfected (Lane 1) or transiently transfected with CAMK1G gene (Lane 2) (Origene Technologies).



Formalin-fixed and paraffin-embedded human prostata carcinoma tissue reacted with CAMK1G (Center K226) (Cat.#[TA302128]), which was peroxidase-conjugated to the secondary antibody, followed by DAB staining. This data demonstrates the use of this antibody for immunohistochemistry; clinical relevance has not been evaluated.