

Product datasheet for **TA302125S**

FGF1 Rabbit Polyclonal Antibody

Product data:

Product Type:	Primary Antibodies
Applications:	IF, IHC, WB
Recommended Dilution:	WB: 1:1000, IHC: 1:10~50, IF: 1:10~50
Reactivity:	Human (Predicted: Pig)
Host:	Rabbit
Isotype:	Ig
Clonality:	Polyclonal
Immunogen:	This FGF1 antibody is generated from rabbits immunized with a KLH conjugated synthetic peptide between 5-30 amino acids from the N-terminal region of human FGF1.
Formulation:	Purified polyclonal antibody supplied in PBS with 0.09% (W/V) sodium azide.
Concentration:	lot specific
Purification:	This antibody is prepared by Saturated Ammonium Sulfate (SAS) precipitation followed by dialysis against PBS.
Conjugation:	Unconjugated
Storage:	Store at -20°C as received.
Stability:	Stable for 12 months from date of receipt.
Predicted Protein Size:	17460 Da
Gene Name:	fibroblast growth factor 1
Database Link:	NP_000791 Entrez Gene 2246 Human P05230
Background:	FGF1 is a member of the fibroblast growth factor (FGF) family. FGF family members possess broad mitogenic and cell survival activities, and are involved in a variety of biological processes, including embryonic development, cell growth, morphogenesis, tissue repair, tumor growth and invasion. This protein functions as a modifier of endothelial cell migration and proliferation, as well as an angiogenic factor. It acts as a mitogen for a variety of mesoderm- and neuroectoderm-derived cells in vitro, thus is thought to be involved in organogenesis.



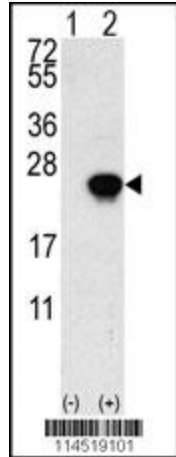
[View online »](#)

Synonyms: AFGF; ECGF; ECGF-beta; ECGFA; ECGFB; FGF-1; FGF-alpha; FGFA; GLIO703; HBGF-1; HBGF1

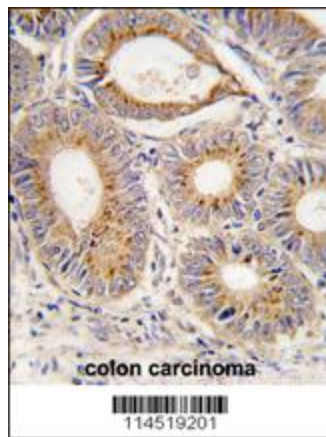
Protein Families: Druggable Genome, Secreted Protein

Protein Pathways: MAPK signaling pathway, Melanoma, Pathways in cancer, Regulation of actin cytoskeleton

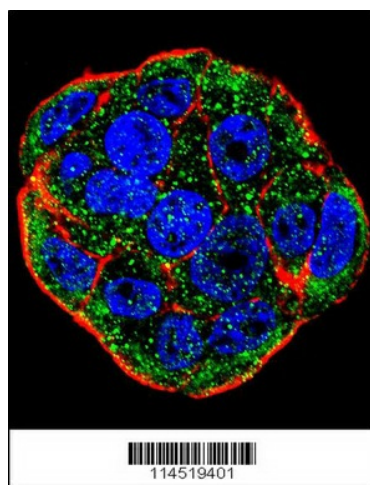
Product images:



Western blot analysis of FGF1 (arrow) using rabbit polyclonal FGF1 Antibody (N-term) (Cat.# [TA302125]). 293 cell lysates (2 ug/lane) either nontransfected (Lane 1) or transiently transfected with the FGF1 gene (Lane 2) (Origene Technologies).



Formalin-fixed and paraffin-embedded human colon carcinoma tissue reacted with FGF1 antibody (N-term) (Cat.#[TA302125]), which was peroxidase-conjugated to the secondary antibody, followed by DAB staining. This data demonstrates the use of this antibody for immunohistochemistry; clinical relevance has not been evaluated.



Confocal immunofluorescent analysis of FGF1 Antibody (N-term) (Cat#[TA302125]) with WiDr cell followed by Alexa Fluor 488-conjugated goat anti-rabbit IgG (green). Actin filaments have been labeled with Alexa Fluor 555 phalloidin (red). DAPI was used to stain the cell nuclear (blue).