

Product datasheet for TA302124S

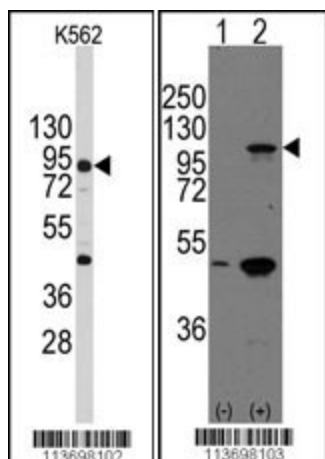
P cadherin (CDH3) Rabbit Polyclonal Antibody

Product data:

| | |
|-------------------------|--|
| Product Type: | Primary Antibodies |
| Applications: | ELISA, IHC, WB |
| Recommended Dilution: | WB: 1:1000, IHC: 1:10~50 |
| Reactivity: | Human |
| Host: | Rabbit |
| Isotype: | Ig |
| Clonality: | Polyclonal |
| Immunogen: | This CDH3 antibody is generated from rabbits immunized with a KLH conjugated synthetic peptide between 660-688 amino acids from the C-terminal region of human CDH3. |
| Formulation: | Purified polyclonal antibody supplied in PBS with 0.09% (W/V) sodium azide. |
| Purification: | This antibody is purified through a protein A column, followed by peptide affinity purification. |
| Conjugation: | Unconjugated |
| Storage: | Store at -20°C as received. |
| Stability: | Stable for 12 months from date of receipt. |
| Predicted Protein Size: | 91418 Da |
| Gene Name: | cadherin 3 |
| Database Link: | NP_001784 Entrez Gene 1001 Human P22223 |
| Background: | CDH3 is a classical cadherin from the cadherin superfamily. It is a calcium-dependent cell-cell adhesion glycoprotein comprised of five extracellular cadherin repeats, a transmembrane region and a highly conserved cytoplasmic tail. Aberrant expression of this protein is observed in cervical adenocarcinomas. Mutations in the gene encoding CDH3 have been associated with congenital hypotrichosis with juvenile macular dystrophy. |
| Synonyms: | CDHP; HJMD; PCAD |
| Protein Families: | Druggable Genome, Transmembrane |
| Protein Pathways: | Cell adhesion molecules (CAMs) |


[View online »](#)

Product images:



Western blot analysis of anti-CDH3 Antibody (C-term) (Cat.# [TA302124]) in K562 cell line lysates (35ug/lane). CDH3 (arrow) was detected using the purified Pab.

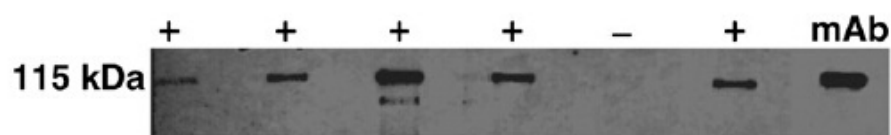


Figure from citation: Western Blot of CDH3 protein level by using anti-CDH3 antibody in CRC patient sera. [View Citation](#)

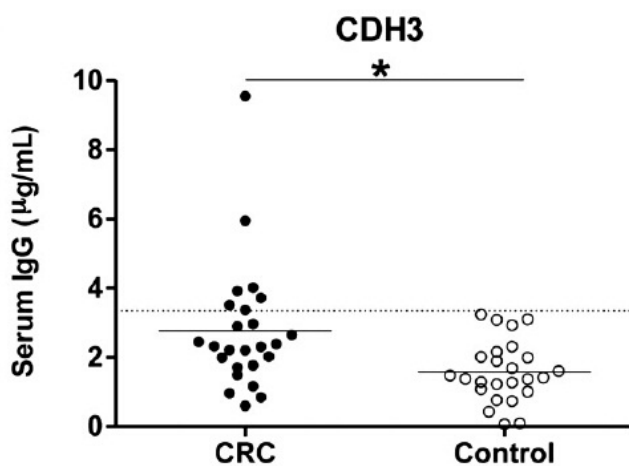
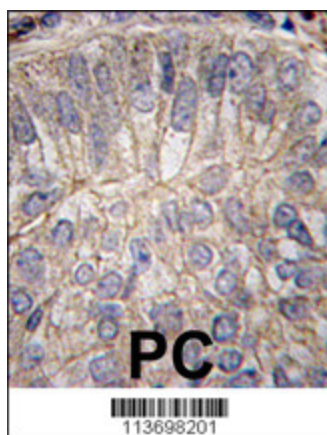


Figure from citation: ELISA of CDH3 protein level by using anti-CDH3 antibody in CRC patient sera. [Humanhttp://www.ncbi.nlm.nih.gov/pubmed/23682078](http://www.ncbi.nlm.nih.gov/pubmed/23682078)



Formalin-fixed and paraffin-embedded human prostate carcinoma tissue reacted with CDH3 antibody (C-term) (Cat.# [TA302124]), which was peroxidase-conjugated to the secondary antibody, followed by DAB staining. This data demonstrates the use of this antibody for immunohistochemistry; clinical relevance has not been evaluated.