

Product datasheet for **TA302124**

P cadherin (CDH3) Rabbit Polyclonal Antibody

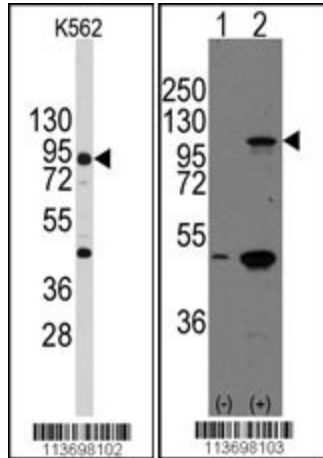
Product data:

Product Type:	Primary Antibodies
Applications:	ELISA, IHC, WB
Recommended Dilution:	WB: 1:1000, IHC: 1:10~50
Reactivity:	Human
Host:	Rabbit
Isotype:	Ig
Clonality:	Polyclonal
Immunogen:	This CDH3 antibody is generated from rabbits immunized with a KLH conjugated synthetic peptide between 660-688 amino acids from the C-terminal region of human CDH3.
Formulation:	Purified polyclonal antibody supplied in PBS with 0.09% (W/V) sodium azide.
Purification:	This antibody is purified through a protein A column, followed by peptide affinity purification.
Conjugation:	Unconjugated
Storage:	Store at -20°C as received.
Stability:	Stable for 12 months from date of receipt.
Predicted Protein Size:	91418 Da
Gene Name:	cadherin 3
Database Link:	NP_001784 Entrez Gene 1001 Human P22223
Background:	CDH3 is a classical cadherin from the cadherin superfamily. It is a calcium-dependent cell-cell adhesion glycoprotein comprised of five extracellular cadherin repeats, a transmembrane region and a highly conserved cytoplasmic tail. Aberrant expression of this protein is observed in cervical adenocarcinomas. Mutations in the gene encoding CDH3 have been associated with congenital hypotrichosis with juvenile macular dystrophy.
Synonyms:	CDHP; HJMD; PCAD
Protein Families:	Druggable Genome, Transmembrane
Protein Pathways:	Cell adhesion molecules (CAMs)



[View online »](#)

Product images:



Western blot analysis of anti-CDH3 Antibody (C-term) (Cat.#TA302124) in K562 cell line lysates (35ug/lane). CDH3 (arrow) was detected using the purified Pab.

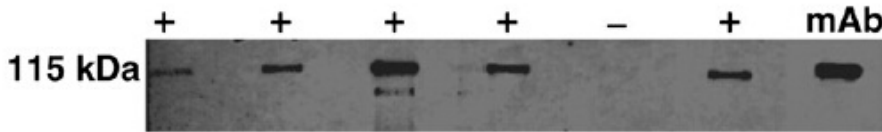


Figure from citation: Western Blot of CDH3 protein level by using anti-CDH3 antibody in CRC patient sera. [View Citation](#)

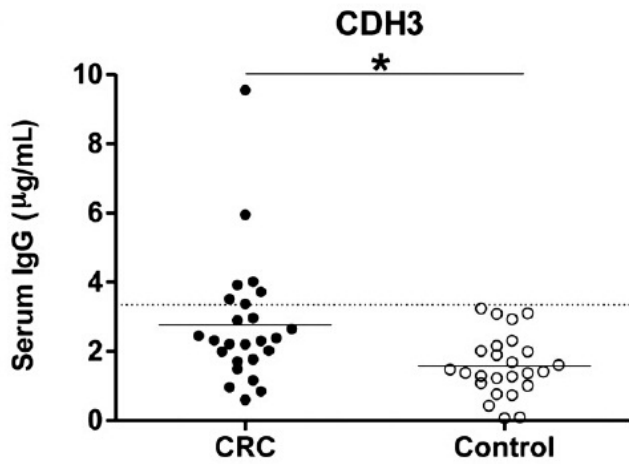
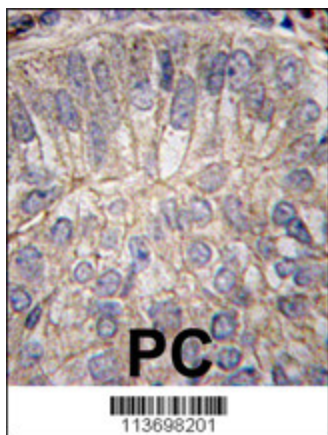


Figure from citation: ELISA of CDH3 protein level by using anti-CDH3 antibody in CRC patient sera. [Humanhttp://www.ncbi.nlm.nih.gov/pubmed/23682078Hum](http://www.ncbi.nlm.nih.gov/pubmed/23682078)



Formalin-fixed and paraffin-embedded human prostate carcinoma tissue reacted with CDH3 antibody (C-term) (Cat.#TA302124), which was peroxidase-conjugated to the secondary antibody, followed by DAB staining. This data demonstrates the use of this antibody for immunohistochemistry; clinical relevance has not been evaluated.