

Product datasheet for **TA302121**

ALDH6A1 Rabbit Polyclonal Antibody

Product data:

Product Type:	Primary Antibodies
Applications:	IHC, WB
Recommended Dilution:	IHC: 1:10~50, WB: 1:1000
Reactivity:	Human (Predicted: Rat)
Host:	Rabbit
Isotype:	Ig
Clonality:	Polyclonal
Immunogen:	This ALDH6A1 antibody is generated from rabbits immunized with a KLH conjugated synthetic peptide between 367-396 amino acids from the C-terminal region of human ALDH6A1.
Formulation:	Purified polyclonal antibody supplied in PBS with 0.09% (W/V) sodium azide.
Concentration:	lot specific
Purification:	This antibody is purified through a protein A column, followed by peptide affinity purification.
Conjugation:	Unconjugated
Storage:	Store at -20°C as received.
Stability:	Stable for 12 months from date of receipt.
Predicted Protein Size:	57858 Da
Gene Name:	aldehyde dehydrogenase 6 family member A1
Database Link:	NP_005580 Entrez Gene 81708 Rat Entrez Gene 4329 Human Q02252
Background:	ALDH6A1 belongs to the aldehyde dehydrogenases family of proteins. This enzyme plays a role in the valine and pyrimidine catabolic pathways. This protein is a mitochondrial methylmalonate semialdehyde dehydrogenase, and catalyzes the irreversible oxidative decarboxylation of malonate and methylmalonate semialdehydes to acetyl- and propionyl-CoA. Methylmalonate semialdehyde dehydrogenase deficiency is characterized by elevated beta-alanine, 3-hydroxypropionic acid, and both isomers of 3-amino and 3-hydroxyisobutyric acids in urine organic acids.



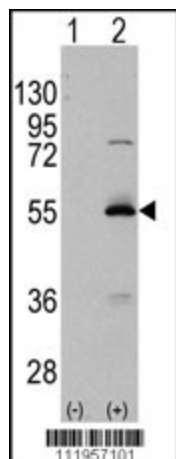
[View online »](#)

Synonyms: MMSADHA; MMSDH

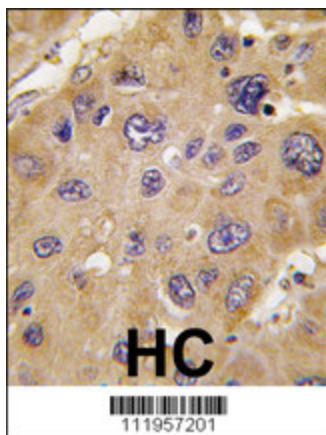
Protein Families: Druggable Genome, Transmembrane

Protein Pathways: Inositol phosphate metabolism, Metabolic pathways, Propanoate metabolism, Valine, leucine and isoleucine degradation

Product images:



Western blot analysis of ALDH6A1 (arrow) using rabbit polyclonal ALDH6A1 Antibody (C-term) (RB11957). 293 cell lysates (2 ug/lane) either nontransfected (Lane 1) or transiently transfected with the ALDH6A1 gene (Lane 2) (Origene Technologies).



Formalin-fixed and paraffin-embedded human hepatocarcinoma tissue reacted with *ALDH6A1 antibody (C-term), which was peroxidase-conjugated to the secondary antibody, followed by DAB staining. This data demonstrates the use of this antibody for immunohistochemistry; clinical relevance has not been evaluated.