

Product datasheet for **TA302117S**

alpha 1 Fetoprotein (AFP) Rabbit Polyclonal Antibody

Product data:

Product Type:	Primary Antibodies
Applications:	IHC, WB
Recommended Dilution:	WB: 1:1000, IHC: 1:10~50
Reactivity:	Human
Host:	Rabbit
Isotype:	Ig
Clonality:	Polyclonal
Immunogen:	This AFP antibody is generated from rabbits immunized with a KLH conjugated synthetic peptide between 300-329 amino acids from the Central region of human AFP.
Formulation:	Purified polyclonal antibody supplied in PBS with 0.09% (W/V) sodium azide.
Concentration:	lot specific
Purification:	This antibody is purified through a protein A column, followed by peptide affinity purification.
Conjugation:	Unconjugated
Storage:	Store at -20°C as received.
Stability:	Stable for 12 months from date of receipt.
Predicted Protein Size:	68678 Da
Gene Name:	alpha fetoprotein
Database Link:	NP_001125 Entrez Gene 174 Human P02771

[View online »](#)

Background:

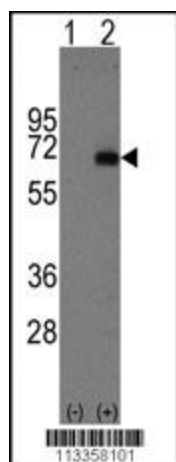
Alpha-fetoprotein (AFP) is a major plasma protein produced by the yolk sac and the liver during fetal life. Alpha-fetoprotein expression in adults is often associated with hepatoma or teratoma. However, hereditary persistence of alpha-fetoprotein may also be found in individuals with no obvious pathology. The protein is thought to be the fetal counterpart of serum albumin, and the alpha-fetoprotein and albumin genes are present in tandem in the same transcriptional orientation on chromosome 4. Alpha-fetoprotein is found in monomeric as well as dimeric and trimeric forms, and binds copper, nickel, fatty acids and bilirubin. The level of alpha-fetoprotein in amniotic fluid is used to measure renal loss of protein to screen for spina bifida and anencephaly.

Synonyms:

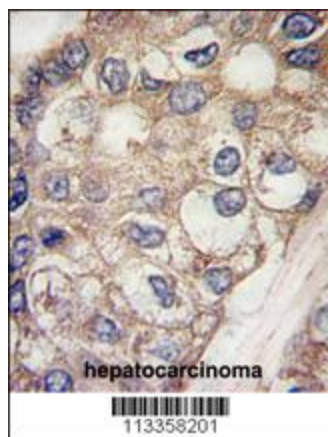
AFPD; FETA; HPAFP

Protein Families:

Druggable Genome, Secreted Protein

Product images:


Western blot analysis of AFP (arrow) using rabbit polyclonal AFP Antibody (Center) (Cat.# [TA302117]). 293 cell lysates (2 ug/lane) either nontransfected (Lane 1) or transiently transfected with the AFP gene (Lane 2) (Origene Technologies).



Formalin-fixed and paraffin-embedded human hepatocarcinoma tissue reacted with AFP antibody (Center) (Cat.#[TA302117]), which was peroxidase-conjugated to the secondary antibody, followed by DAB staining. This data demonstrates the use of this antibody for immunohistochemistry; clinical relevance has not been evaluated.