

## Product datasheet for **TA302114S**

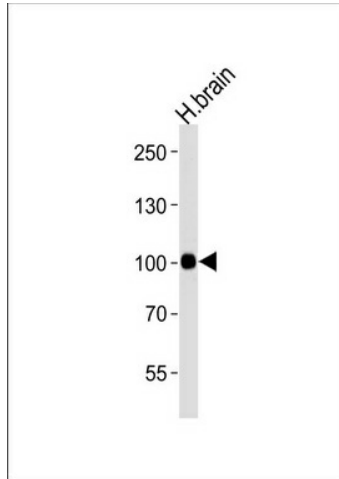
### CDHH (CDH13) Rabbit Polyclonal Antibody

#### Product data:

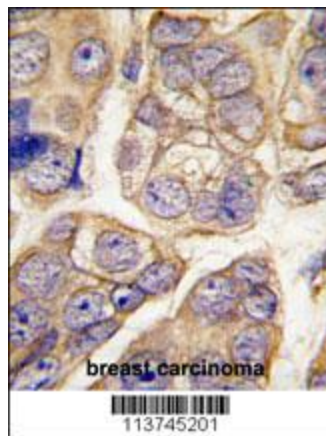
Product Type:	Primary Antibodies
Applications:	FC, IHC, WB
Recommended Dilution:	WB: 1:1000, IHC: 1:10~50, FC: 1:10~50
Reactivity:	Human (Predicted: Mouse, Chicken)
Host:	Rabbit
Isotype:	Ig
Clonality:	Polyclonal
Immunogen:	This H Cadherin (CDH13) antibody is generated from rabbits immunized with a KLH conjugated synthetic peptide between 589-617 amino acids from the C-terminal region of human H Cadherin (CDH13).
Formulation:	Purified polyclonal antibody supplied in PBS with 0.09% (W/V) sodium azide.
Purification:	This antibody is purified through a protein A column, followed by peptide affinity purification.
Conjugation:	Unconjugated
Storage:	Store at -20°C as received.
Stability:	Stable for 12 months from date of receipt.
Predicted Protein Size:	78287 Da
Gene Name:	cadherin 13
Database Link:	<a href="#">NP_001248</a> <a href="#">Entrez Gene 12554 Mouse</a> <a href="#">Entrez Gene 1012 Human</a> <a href="#">P55290</a>
Background:	CDH13 is a member of the cadherin superfamily. This protein is a calcium dependent cell-cell adhesion glycoprotein comprised of five extracellular cadherin repeats, a transmembrane region but, unlike the typical cadherin superfamily member, lacks the highly conserved cytoplasmic region. This particular cadherin is a putative mediator of cell-cell interaction in the heart and may act as a negative regulator of neural cell growth.
Synonyms:	CDHH; P105



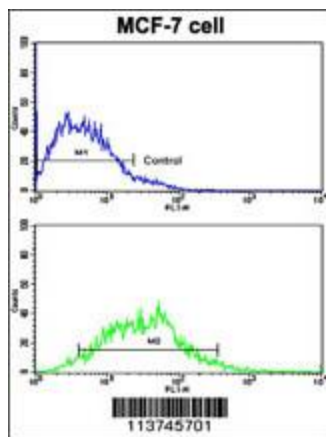
[View online »](#)

**Product images:**


Western blot analysis of lysate from human brain tissue lysate, using CDH13 Antibody (C-term) (Cat. #TA302114). [TA302114] was diluted at 1:1000 at each lane. A goat anti-rabbit IgG H&L (HRP) at 1:5000 dilution was used as the secondary antibody. Lysate at 35ug per lane.



Formalin-fixed and paraffin-embedded human breast carcinoma tissue reacted with CDH13 antibody (C-term) (Cat.#[TA302114]), which was peroxidase-conjugated to the secondary antibody, followed by DAB staining. This data demonstrates the use of this antibody for immunohistochemistry; clinical relevance has not been evaluated.



Flow cytometric analysis of MCF-7 cells using H Cadherin (CDH13) Antibody (C-term) (bottom histogram) compared to a negative control cell (top histogram). FITC-conjugated goat-anti-rabbit secondary antibodies were used for the analysis.