

## Product datasheet for TA302112S

### GUCY1A1 Rabbit Polyclonal Antibody

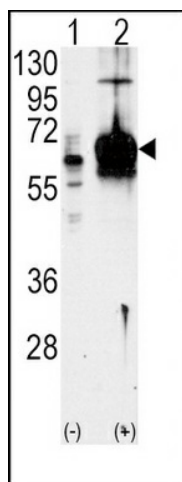
#### Product data:

Product Type:	Primary Antibodies
Applications:	IHC, WB
Recommended Dilution:	WB: 1:1000, IHC: 1:10~50
Reactivity:	Human
Host:	Rabbit
Isotype:	Ig
Clonality:	Polyclonal
Immunogen:	This Guanylyl Cyclase alpha 1 (GUCY1A3) antibody is generated from rabbits immunized with a KLH conjugated synthetic peptide between 269-300 amino acids from the N-terminal region of human Guanylyl Cyclase alpha 1 (GUCY1A3).
Formulation:	Purified polyclonal antibody supplied in PBS with 0.09% (W/V) sodium azide.
Purification:	This antibody is prepared by Saturated Ammonium Sulfate (SAS) precipitation followed by dialysis against PBS.
Conjugation:	Unconjugated
Storage:	Store at -20°C as received.
Stability:	Stable for 12 months from date of receipt.
Predicted Protein Size:	77452 Da
Gene Name:	guanylate cyclase 1, soluble, alpha 3
Database Link:	<a href="#">NP_000847</a> <a href="#">Entrez Gene 2982 Human</a> <a href="#">Q02108</a>
Background:	Soluble guanylate cyclase (sGC), a heterodimeric protein consisting of an alpha and a beta subunit, catalyzes the conversion of GTP to the second messenger cGMP and functions as the main receptor for nitric oxide and nitrovasodilator drugs.
Synonyms:	GC-SA3; GUC1A3; GUCA3; GUCSA3; GUCY1A1; MYMY6
Protein Families:	Druggable Genome
Protein Pathways:	Gap junction, Long-term depression, Purine metabolism, Vascular smooth muscle contraction

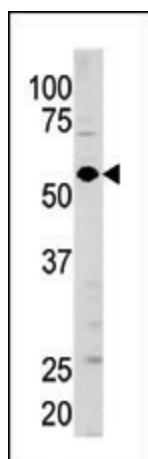


[View online »](#)

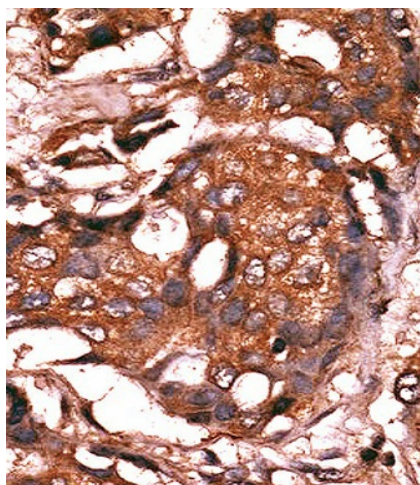
## Product images:



Western blot analysis of GUCY1A3 (arrow) using GUCY1A3 Antibody (N-term) (Cat.#[TA302112]). 293 cell lysates (2 ug/lane) either nontransfected (Lane 1) or transiently transfected with the GUCY1A3 gene (Lane 2) (Origene Technologies).



Western blot analysis of anti-GUCY1A3 Pab (Cat. #[TA302112]) in mouse brain tissue lysate (35ug/lane). GUCY1A3 (arrow) was detected using the purified Pab.



Formalin-fixed and paraffin-embedded human cancer tissue reacted with the primary antibody, which was peroxidase-conjugated to the secondary antibody, followed by AEC staining. This data demonstrates the use of this antibody for immunohistochemistry; clinical relevance has not been evaluated. BC = breast carcinoma; HC = hepatocarcinoma.