

## Product datasheet for TA302112

### GUCY1A1 Rabbit Polyclonal Antibody

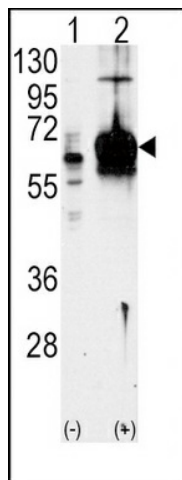
#### Product data:

|                         |  |
|-------------------------|--|
| Product Type:           | Primary Antibodies   |
| Applications:           | IHC, WB  |
| Recommended Dilution:   | WB: 1:1000, IHC: 1:10~50   |
| Reactivity:             | Human  |
| Host:                   | Rabbit   |
| Isotype:                | Ig   |
| Clonality:              | Polyclonal   |
| Immunogen:              | This Guanylyl Cyclase alpha 1 (GUCY1A3) antibody is generated from rabbits immunized with a KLH conjugated synthetic peptide between 269-300 amino acids from the N-terminal region of human Guanylyl Cyclase alpha 1 (GUCY1A3).                 |
| Formulation:            | Purified polyclonal antibody supplied in PBS with 0.09% (W/V) sodium azide.  |
| Purification:           | This antibody is prepared by Saturated Ammonium Sulfate (SAS) precipitation followed by dialysis against PBS.  |
| Conjugation:            | Unconjugated   |
| Storage:                | Store at -20°C as received.  |
| Stability:              | Stable for 12 months from date of receipt.   |
| Predicted Protein Size: | 77452 Da   |
| Gene Name:              | guanylate cyclase 1, soluble, alpha 3  |
| Database Link:          | <a href="#">NP_000847</a><br><a href="#">Entrez Gene 2982 Human</a><br><a href="#">Q02108</a>  |
| Background:             | Soluble guanylate cyclase (sGC), a heterodimeric protein consisting of an alpha and a beta subunit, catalyzes the conversion of GTP to the second messenger cGMP and functions as the main receptor for nitric oxide and nitrovasodilator drugs. |
| Synonyms:               | GC-SA3; GUC1A3; GUCA3; GUCSA3; GUCY1A1; MYMY6  |
| Protein Families:       | Druggable Genome   |
| Protein Pathways:       | Gap junction, Long-term depression, Purine metabolism, Vascular smooth muscle contraction  |

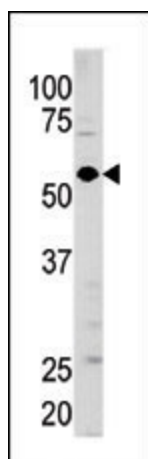


[View online »](#)

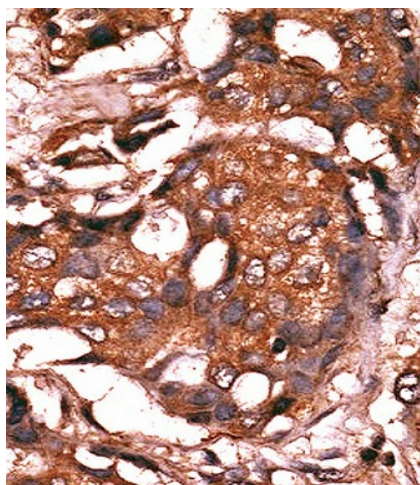
## Product images:



Western blot analysis of GUCY1A3 (arrow) using GUCY1A3 Antibody (N-term) (Cat.#TA302112). 293 cell lysates (2 ug/lane) either nontransfected (Lane 1) or transiently transfected with the GUCY1A3 gene (Lane 2) (Origene Technologies).



Western blot analysis of anti-GUCY1A3 Pab (Cat. #TA302112) in mouse brain tissue lysate (35ug/lane). GUCY1A3 (arrow) was detected using the purified Pab.



Formalin-fixed and paraffin-embedded human cancer tissue reacted with the primary antibody, which was peroxidase-conjugated to the secondary antibody, followed by AEC staining. This data demonstrates the use of this antibody for immunohistochemistry; clinical relevance has not been evaluated. BC = breast carcinoma; HC = hepatocarcinoma.