

Product datasheet for **TA302110S**

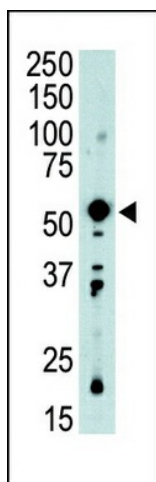
PDK2 Rabbit Polyclonal Antibody

Product data:

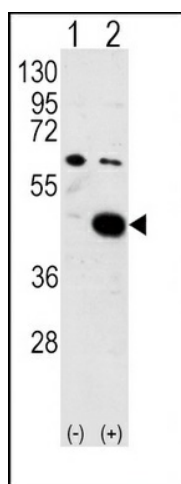
Product Type:	Primary Antibodies
Applications:	IHC, WB
Recommended Dilution:	WB: 1:1000, IHC: 1:50~100
Reactivity:	Human, Mouse, Rat, Monkey
Host:	Rabbit
Isotype:	Ig
Clonality:	Polyclonal
Immunogen:	This PDK2 antibody is generated from rabbits immunized with a KLH conjugated synthetic peptide between 378-407 amino acids from the C-terminal region of human PDK2.
Formulation:	Purified polyclonal antibody supplied in PBS with 0.09% (W/V) sodium azide.
Concentration:	lot specific
Purification:	This antibody is prepared by Saturated Ammonium Sulfate (SAS) precipitation followed by dialysis against PBS.
Conjugation:	Unconjugated
Storage:	Store at -20°C as received.
Stability:	Stable for 12 months from date of receipt.
Predicted Protein Size:	46153 Da
Gene Name:	pyruvate dehydrogenase kinase 2
Database Link:	NP_002602 Entrez Gene 18604 Mouse Entrez Gene 81530 Rat Entrez Gene 704169 Monkey Entrez Gene 5164 Human Q15119
Background:	PDK2 inhibits the mitochondrial pyruvate dehydrogenase complex by phosphorylation of the E1 alpha subunit, thus contributing to the regulation of glucose metabolism.
Synonyms:	PDHK2; PDKII
Protein Families:	Druggable Genome, Protein Kinase


[View online »](#)

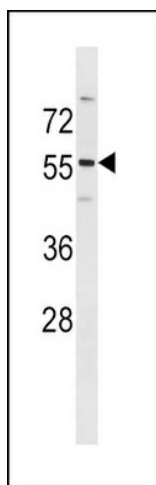
Product images:



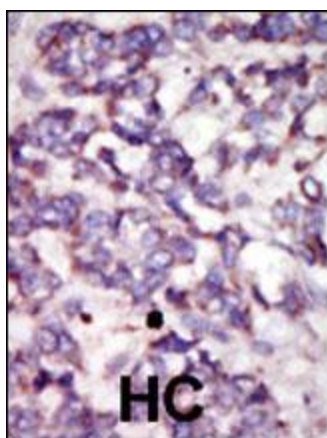
Western blot analysis of PDK2 Antibody (C-term) (Cat. #TA302110) in mouse intestine tissue lysate (35ug/lane). PDK2 (arrow) was detected using the purified Pab.



Western blot analysis of PDK2 (arrow) using PDK2 Antibody (C-term) (Cat. #TA302110). 293 cell lysates (2 ug/lane) either nontransfected (Lane 1) or transiently transfected with the PDK2 gene (Lane 2) (Origene Technologies).



PDK2 Antibody (C392) (Cat. #TA302110S) western blot analysis in Hela cell line lysates (35ug/lane). This demonstrates the PDK2 antibody detected the PDK2 protein (arrow).



Formalin-fixed and paraffin-embedded human cancer tissue reacted with the primary antibody, which was peroxidase-conjugated to the secondary antibody, followed by DAB staining. This data demonstrates the use of this antibody for immunohistochemistry; clinical relevance has not been evaluated. BC = breast carcinoma; HC = hepatocarcinoma.