

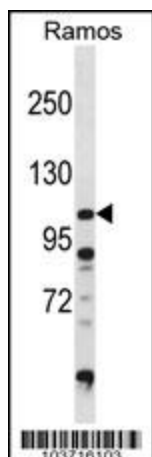
Product datasheet for TA302108

DGKZ Rabbit Polyclonal Antibody

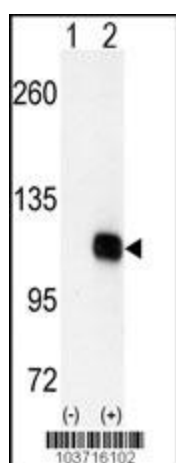
Product data:

Product Type:	Primary Antibodies
Applications:	IF, IHC, WB
Recommended Dilution:	WB: 1:1000, IHC: 1:50~100, IF: 1:10~50
Reactivity:	Human
Host:	Rabbit
Isotype:	Ig
Clonality:	Polyclonal
Immunogen:	This DGKZ antibody is generated from rabbits immunized with a KLH conjugated synthetic peptide between 989-1019 amino acids from the C-terminal region of human DGKZ.
Formulation:	Purified polyclonal antibody supplied in PBS with 0.09% (W/V) sodium azide.
Purification:	This antibody is purified through a protein A column, followed by peptide affinity purification.
Conjugation:	Unconjugated
Storage:	Store at -20°C as received.
Stability:	Stable for 12 months from date of receipt.
Predicted Protein Size:	124122 Da
Gene Name:	diacylglycerol kinase zeta
Database Link:	NP_003637 Entrez Gene 8525 Human Q13574
Background:	DGKZ belongs to the eukaryotic diacylglycerol kinase family. It may attenuate protein kinase C activity by regulating diacylglycerol levels in intracellular signaling cascade and signal transduction.
Synonyms:	DAGK5; DAGK6; DGK-ZETA; hDGKzeta
Protein Families:	Druggable Genome
Protein Pathways:	Glycerolipid metabolism, Glycerophospholipid metabolism, Metabolic pathways, Phosphatidylinositol signaling system

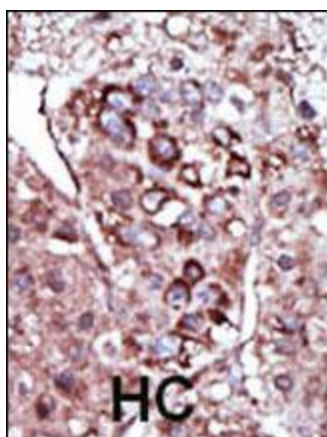

[View online »](#)

Product images:


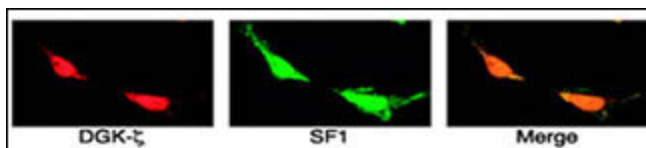
DGKZ Antibody (D1004) (Cat. #TA302108) western blot analysis in Ramos cell line lysates (35ug/lane). This demonstrates the DGKZ antibody detected the DGKZ protein (arrow).



Western blot analysis of DGKZ (arrow) using DGKZ Antibody (C-term) (Cat. #TA302108). 293 cell lysates (2 ug/lane) either nontransfected (Lane 1) or transiently transfected with the DGKZ gene (Lane 2) (Origene Technologies).



Formalin-fixed and paraffin-embedded human cancer tissue reacted with the primary antibody, which was peroxidase-conjugated to the secondary antibody, followed by AEC staining. This data demonstrates the use of this antibody for immunohistochemistry; clinical relevance has not been evaluated. BC = breast carcinoma; HC = hepatocarcinoma.



SF1 colocalizes with DGK and PA in the nuclei of H295R cells. Cells were plated onto glass coverslips, fixed, permeabilized, and incubated with anti-SF1 and anti-DGKZ (B) for 1 h. Coverslips were washed and incubated with anti-fluorescein isothiocyanate and antirhodamine, and immunofluorescence was detected by confocal microscopy.