

## Product datasheet for **TA302107S**

### WIF1 Rabbit Polyclonal Antibody

#### Product data:

Product Type:	Primary Antibodies
Applications:	IHC, WB
Recommended Dilution:	WB: 1:1000, IHC: 1:10~50
Reactivity:	Human
Host:	Rabbit
Isotype:	Ig
Clonality:	Polyclonal
Immunogen:	This WIF1 antibody is generated from rabbits immunized with a KLH conjugated synthetic peptide between 347-376 amino acids from the C-terminal region of human WIF1.
Formulation:	Purified polyclonal antibody supplied in PBS with 0.09% (W/V) sodium azide.
Concentration:	lot specific
Purification:	This antibody is purified through a protein A column, followed by peptide affinity purification.
Conjugation:	Unconjugated
Storage:	Store at -20°C as received.
Stability:	Stable for 12 months from date of receipt.
Predicted Protein Size:	41528 Da
Gene Name:	WNT inhibitory factor 1
Database Link:	<a href="#">NP_009122</a> <a href="#">Entrez Gene 11197 Human</a> <a href="#">Q9Y5W5</a>
Background:	WNT proteins are extracellular signaling molecules involved in the control of embryonic development. WIF1 is a secreted protein, which binds WNT proteins and inhibits their activities. This protein contains a WNT inhibitory factor (WIF) domain and 5 epidermal growth factor (EGF)-like domains. It may be involved in mesoderm segmentation. This protein is found to be present in fish, amphibia and mammals.
Synonyms:	WIF-1

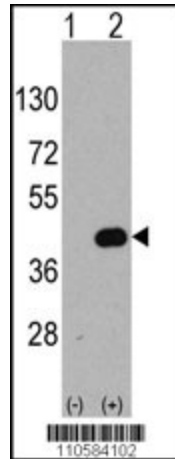


[View online »](#)

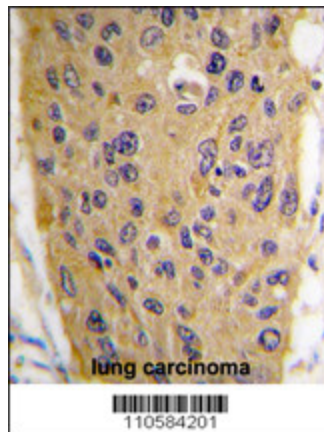
**Protein Families:** Cancer stem cells, Druggable Genome, ES Cell Differentiation/IPS, Secreted Protein, Stem cell relevant signaling - Wnt Signaling pathway

**Protein Pathways:** Wnt signaling pathway

**Product images:**



Western blot analysis of WIF1 (arrow) using rabbit polyclonal WIF1 (C-term) Antibody (Cat.# [TA302107]). 293 cell lysates (2 ug/lane) either nontransfected (Lane 1) or transiently transfected with the WIF1 gene (Lane 2) (Origene Technologies).



Formalin-fixed and paraffin-embedded human lung carcinoma tissue reacted with WIF1 Antibody (C-term) (Cat.#[TA302107]), which was peroxidase-conjugated to the secondary antibody, followed by DAB staining. This data demonstrates the use of this antibody for immunohistochemistry; clinical relevance has not been evaluated.