

Product datasheet for **TA302105**

PRMT8 Rabbit Polyclonal Antibody

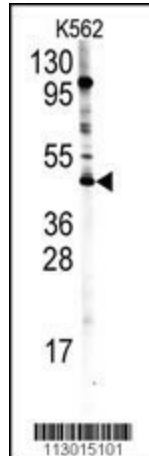
Product data:

Product Type:	Primary Antibodies
Applications:	WB
Recommended Dilution:	WB: 1:1000
Reactivity:	Human (Predicted: Mouse)
Host:	Rabbit
Isotype:	Ig
Clonality:	Polyclonal
Immunogen:	This PRMT8 antibody is generated from rabbits immunized with a KLH conjugated synthetic peptide between 344-373 amino acids from the C-terminal region of human PRMT8.
Formulation:	Purified polyclonal antibody supplied in PBS with 0.09% (W/V) sodium azide.
Concentration:	lot specific
Purification:	This antibody is prepared by Saturated Ammonium Sulfate (SAS) precipitation followed by dialysis against PBS.
Storage:	Store at -20°C as received.
Stability:	Stable for 12 months from date of receipt.
Predicted Protein Size:	45160 Da
Gene Name:	protein arginine methyltransferase 8
Database Link:	NP_062828 Entrez Gene 381813 MouseEntrez Gene 56341 Human
Background:	Protein arginine methylation plays a role in signal transduction, RNA processing, transcriptional regulation, and DNA repair. PRMT8, a protein arginine N-methyltransferase most closely related to PRMT1, methylates the guanidino nitrogens of arginyl residues in some proteins. This protein associates with the plasma membrane following myristoylation and exhibits a brain-specific expression pattern, making it unique within this family of enzymes.
Synonyms:	HRMT1L3; HRMT1L4
Protein Families:	Druggable Genome

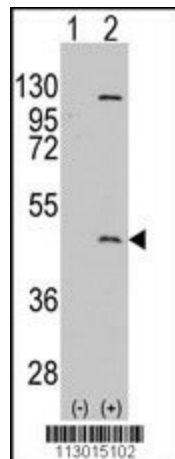


[View online »](#)

Product images:



Western blot analysis of PRMT8 Antibody (C-term) (Cat.#TA302105) in K562 cell line lysates (35ug/lane). PRMT8 (arrow) was detected using the purified Pab.



Western blot analysis of PRMT8 (arrow) using rabbit polyclonal PRMT8 Antibody (C-term) (Cat.#TA302105). 293 cell lysates (2 ug/lane) either nontransfected (Lane 1) or transiently transfected with the PRMT8 gene (Lane 2) (Origene Technologies).