

Product datasheet for **TA302102**

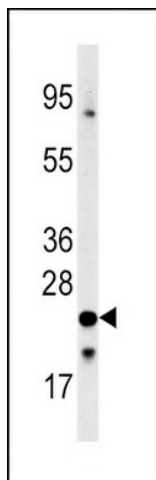
Frataxin (FXN) Rabbit Polyclonal Antibody

Product data:

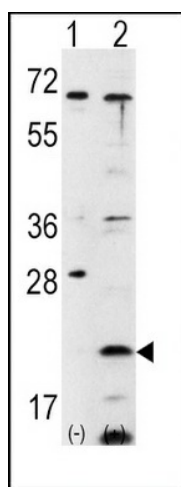
Product Type:	Primary Antibodies
Applications:	IHC, WB
Recommended Dilution:	WB: 1:1000, IHC: 1:10~50
Reactivity:	Human (Predicted: Mouse)
Host:	Rabbit
Isotype:	Ig
Clonality:	Polyclonal
Immunogen:	This FXN antibody is generated from rabbits immunized with a KLH conjugated synthetic peptide between 143-172 amino acids from the C-terminal region of human FXN.
Formulation:	Purified polyclonal antibody supplied in PBS with 0.09% (W/V) sodium azide.
Purification:	This antibody is prepared by Saturated Ammonium Sulfate (SAS) precipitation followed by dialysis against PBS.
Conjugation:	Unconjugated
Storage:	Store at -20°C as received.
Stability:	Stable for 12 months from date of receipt.
Predicted Protein Size:	23135 Da
Gene Name:	frataxin
Database Link:	NP_000135 Entrez Gene 14297 Mouse Entrez Gene 2395 Human Q16595
Background:	FXN is a mitochondrial protein which belongs to the FRATAXIN family. The protein functions in regulating mitochondrial iron transport and respiration. The expansion of intronic trinucleotide repeat GAA results in Friedreich ataxia.
Synonyms:	CyaY; FA; FARR; FRDA; X25
Protein Families:	Druggable Genome



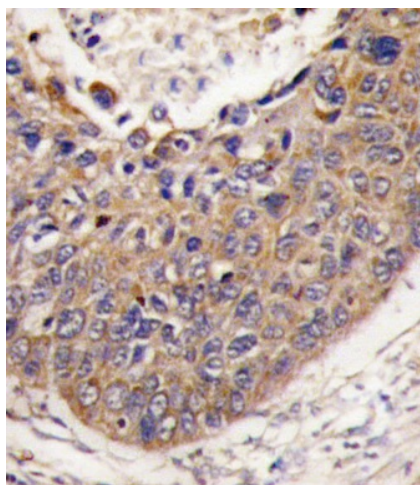
[View online »](#)

Product images:


Western blot analysis of anti-FXN Antibody (C-term) (Cat#TA302102) in 293 cell line lysates (35ug/lane). FXN (arrow) was detected using the purified Pab.



Western blot analysis of FXN (arrow) using rabbit polyclonal FXN Antibody (C-term) (RB12571). 293 cell lysates (2 ug/lane) either nontransfected (Lane 1) or transiently transfected with the FXN gene (Lane 2) (Origene Technologies).



Formalin-fixed and paraffin-embedded human lung carcinoma tissue reacted with FXN antibody (C-term) (Cat.#TA302102), which was peroxidase-conjugated to the secondary antibody, followed by DAB staining. This data demonstrates the use of this antibody for immunohistochemistry; clinical relevance has not been evaluated.