

## Product datasheet for **TA302097**

### SNAIL (SNAI1) Rabbit Polyclonal Antibody

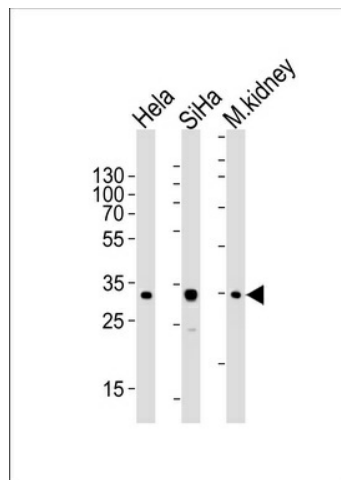
#### Product data:

Product Type:	Primary Antibodies
Applications:	WB
Recommended Dilution:	WB: 1:1000
Reactivity:	Human
Host:	Rabbit
Isotype:	Ig
Clonality:	Polyclonal
Immunogen:	This SNAI1 antibody is generated from rabbits immunized with a KLH conjugated synthetic peptide between 1-30 amino acids from the N-terminal region of human SNAI1.
Formulation:	Purified polyclonal antibody supplied in PBS with 0.09% (W/V) sodium azide.
Purification:	This antibody is prepared by Saturated Ammonium Sulfate (SAS) precipitation followed by dialysis against PBS.
Conjugation:	Unconjugated
Storage:	Store at -20°C as received.
Stability:	Stable for 12 months from date of receipt.
Predicted Protein Size:	29083 Da
Gene Name:	snail family transcriptional repressor 1
Database Link:	<a href="#">NP_005976</a> <a href="#">Entrez Gene 6615 Human</a> <a href="#">O95863</a>
Background:	The Drosophila embryonic protein snail is a zinc finger transcriptional repressor which downregulates the expression of ectodermal genes within the mesoderm. The nuclear protein is structurally similar to the Drosophila snail protein, and is also thought to be critical for mesoderm formation in the developing embryo.
Synonyms:	dj710H13.1; SLUGH2; SNA; SNAH; SNAIL; SNAIL1
Protein Families:	Druggable Genome
Protein Pathways:	Adherens junction

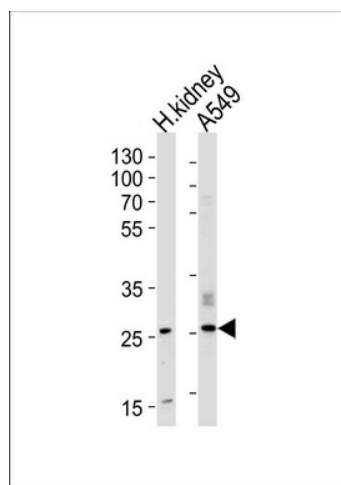


[View online »](#)

## Product images:



Western blot analysis of lysates from HeLa, SiHa cell line and mouse kidney tissue lysate (from left to right), using SNAI1 Antibody (N-term R8) (Cat. #TA302097). TA302097 was diluted at 1:1000 at each lane. A goat anti-rabbit IgG H&L (HRP) at 1:5000 dilution was used as the secondary antibody. Lysates at 35ug per lane.



Western blot analysis of lysates from human kidney tissue lysate and A549 cell line (from left to right), using SNAI1 Antibody (N-term R8) (Cat. #TA302097). TA302097 was diluted at 1:1000 at each lane. A goat anti-rabbit IgG H&L (HRP) at 1:5000 dilution was used as the secondary antibody. Lysates at 35ug per lane.