

## Product datasheet for **TA302094**

### GFAP Rabbit Polyclonal Antibody

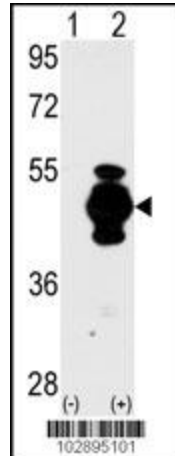
#### Product data:

Product Type:	Primary Antibodies
Applications:	IHC, WB
Recommended Dilution:	IHC: 1:50~100, WB: 1:1000
Reactivity:	Human
Host:	Rabbit
Isotype:	Ig
Clonality:	Polyclonal
Immunogen:	This GFAP antibody is generated from rabbits immunized with a KLH conjugated synthetic peptide between 10-40 amino acids from the N-terminal region of human GFAP.
Formulation:	Purified polyclonal antibody supplied in PBS with 0.09% (W/V) sodium azide.
Purification:	This antibody is prepared by Saturated Ammonium Sulfate (SAS) precipitation followed by dialysis against PBS.
Conjugation:	Unconjugated
Storage:	Store at -20°C as received.
Stability:	Stable for 12 months from date of receipt.
Predicted Protein Size:	49880 Da
Gene Name:	glial fibrillary acidic protein
Database Link:	<a href="#">NP_002046</a> <a href="#">Entrez Gene 2670 Human</a> <a href="#">P14136</a>
Background:	GFAP is one of the major intermediate filament proteins of mature astrocytes. It is used as a marker to distinguish astrocytes from other glial cells during development. Mutations in this gene cause Alexander disease, a rare disorder of astrocytes in the central nervous system.
Synonyms:	ALXDRD
Protein Families:	ES Cell Differentiation/IPS

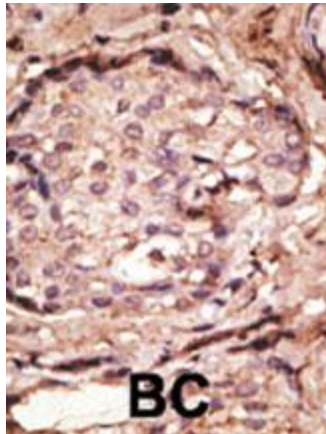


[View online »](#)

## Product images:



Western blot analysis of GFAP (arrow) using GFAP Antibody (N-term) (Cat.#TA302094). 293 cell lysates (2 ug/lane) either nontransfected (Lane 1) or transiently transfected with the GFAP gene (Lane 2) (Origene Technologies).



Formalin-fixed and paraffin-embedded human cancer tissue reacted with the primary antibody, which was peroxidase-conjugated to the secondary antibody, followed by DAB staining. This data demonstrates the use of this antibody for immunohistochemistry; clinical relevance has not been evaluated. BC = breast carcinoma; HC = hepatocarcinoma.