

## Product datasheet for **TA302093S**

### Rad9 (RAD9A) Rabbit Polyclonal Antibody

#### Product data:

Product Type:	Primary Antibodies
Applications:	IHC, WB
Recommended Dilution:	WB: 1:1000, IHC: 1:50~100
Reactivity:	Human, Mouse (Predicted: Monkey)
Host:	Rabbit
Isotype:	Ig
Clonality:	Polyclonal
Immunogen:	This RAD9 antibody is generated from rabbits immunized with a KLH conjugated synthetic peptide between 1-30 amino acids from human RAD9.
Formulation:	Purified polyclonal antibody supplied in PBS with 0.09% (W/V) sodium azide.
Concentration:	lot specific
Purification:	This antibody is prepared by Saturated Ammonium Sulfate (SAS) precipitation followed by dialysis against PBS.
Conjugation:	Unconjugated
Storage:	Store at -20°C as received.
Stability:	Stable for 12 months from date of receipt.
Predicted Protein Size:	42489 Da
Gene Name:	RAD9 checkpoint clamp component A
Database Link:	<a href="#">NP_004575</a> <a href="#">Entrez Gene 19367 Mouse</a> <a href="#">Entrez Gene 712345 Monkey</a> <a href="#">Entrez Gene 5883 Human</a> <a href="#">Q99638</a>
Background:	This gene product is highly similar to <i>Schizosaccharomyces pombe</i> rad9, a cell cycle checkpoint protein required for cell cycle arrest and DNA damage repair in response to DNA damage. This protein is found to possess 3' to 5' exonuclease activity, which may contribute to its role in sensing and repairing DNA damage. It forms a checkpoint protein complex with RAD1 and HUS1. This complex is recruited by checkpoint protein RAD17 to the sites of DNA damage, which is thought to be important for triggering the checkpoint-signaling cascade. Use of alternative polyA sites has been noted for this gene.

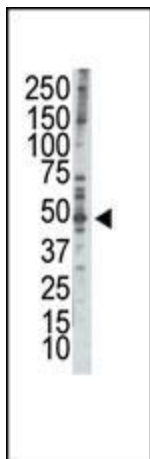


[View online »](#)

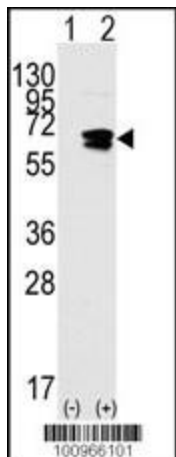
**Synonyms:** RAD9

**Protein Families:** Druggable Genome, Stem cell - Pluripotency

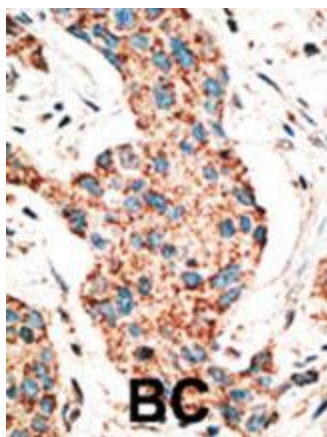
**Product images:**



Western blot analysis of anti-Rad9 BH3 domain Pab (Cat. #[TA302093]) in HL-60 cell lysate. Rad9 BH3 domain (arrow) was detected using purified Pab. Secondary HRP-anti-rabbit was used for signal visualization with chemiluminescence.



Western blot analysis of Rad9 (arrow) using rabbit polyclonal Rad9 BH3 domain Pab (Cat. # [TA302093]). 293 cell lysates (2 ug/lane) either nontransfected (Lane 1) or transiently transfected with the Rad9 gene (Lane 2) (Origene Technologies).



Formalin-fixed and paraffin-embedded human cancer tissue reacted with the primary antibody, which was peroxidase-conjugated to the secondary antibody, followed by AEC staining. This data demonstrates the use of this antibody for immunohistochemistry; clinical relevance has not been evaluated. BC = breast carcinoma; HC = hepatocarcinoma.