

Product datasheet for **TA302080**

DDX3 (DDX3X) Rabbit Polyclonal Antibody

Product data:

Product Type:	Primary Antibodies
Applications:	IHC, WB
Recommended Dilution:	WB: 1:1000, IHC: 1:10~50
Reactivity:	Human (Predicted: Mouse, Xenopus)
Host:	Rabbit
Isotype:	Ig
Clonality:	Polyclonal
Immunogen:	This DDX3 antibody is generated from rabbits immunized with a KLH conjugated synthetic peptide between 456-485 amino acids from the C-terminal region of human DDX3.
Formulation:	Purified polyclonal antibody supplied in PBS with 0.09% (W/V) sodium azide.
Concentration:	lot specific
Purification:	This antibody is prepared by Saturated Ammonium Sulfate (SAS) precipitation followed by dialysis against PBS.
Conjugation:	Unconjugated
Storage:	Store at -20°C as received.
Stability:	Stable for 12 months from date of receipt.
Predicted Protein Size:	73113 Da
Gene Name:	DEAD-box helicase 3, X-linked
Database Link:	NP_001347 Entrez Gene 13205 Mouse Entrez Gene 1654 Human O00571



[View online »](#)

Background:

DEAD box proteins, characterized by the conserved motif Asp-Glu-Ala-Asp (DEAD), are putative RNA helicases. They are implicated in a number of cellular processes involving alteration of RNA secondary structure such as translation initiation, nuclear and mitochondrial splicing, and ribosome and spliceosome assembly. Based on their distribution patterns, some members of this family are believed to be involved in embryogenesis, spermatogenesis, and cellular growth and division. DDX3 is a DEAD box protein, which interacts specifically with hepatitis C virus core protein resulting a change in intracellular location. The DDX3 gene has a homolog located in the nonrecombining region of the Y chromosome. The protein sequence is 91% identical between this gene and the Y-linked homolog.

Synonyms:

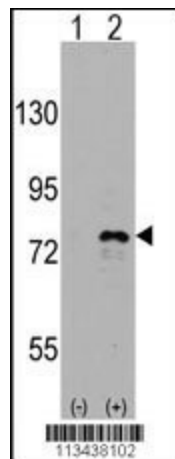
CAP-Rf; DBX; DDX3; DDX14; HLP2

Protein Families:

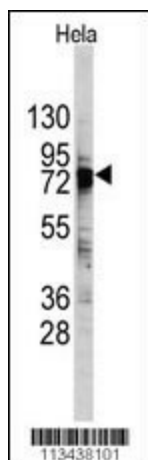
ES Cell Differentiation/IPS

Protein Pathways:

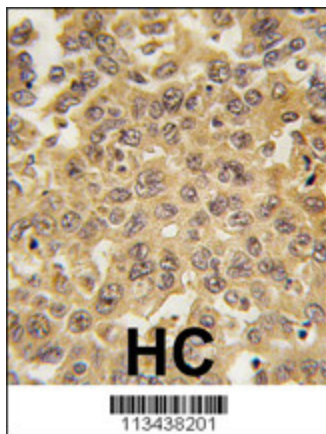
RIG-I-like receptor signaling pathway

Product images:

Western blot analysis of DDX3 (arrow) using rabbit polyclonal DDX3 Antibody (C-term) (Cat.#TA302080).293 cell lysates (2 ug/lane) either nontransfected (Lane 1) or transiently transfected with the DDX3 gene (Lane 2) (Origene Technologies).



Western blot analysis of DDX3 Antibody (C-term) (Cat.#TA302080) in HeLa cell line lysates (35ug/lane). DDX3 (arrow) was detected using the purified Pab.



Formalin-fixed and paraffin-embedded human hepatocarcinoma tissue reacted with DDX3 antibody (C-term), which was peroxidase-conjugated to the secondary antibody, followed by DAB staining. This data demonstrates the use of this antibody for immunohistochemistry; clinical relevance has not been evaluated.