

## Product datasheet for **TA302076S**

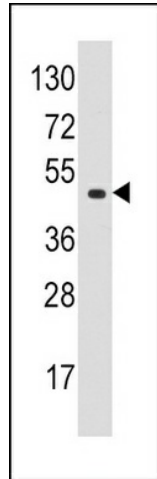
### EIF4A1 Rabbit Polyclonal Antibody

#### Product data:

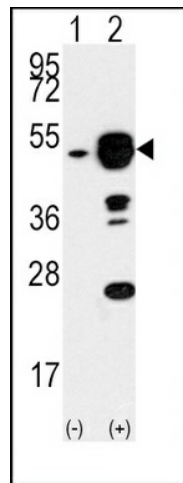
Product Type:	Primary Antibodies
Applications:	IHC, WB
Recommended Dilution:	WB: 1:1000, IHC: 1:10~50
Reactivity:	Human (Predicted: Mouse, Bovine, Monkey)
Host:	Rabbit
Isotype:	Ig
Clonality:	Polyclonal
Immunogen:	This EIF4A1 antibody is generated from rabbits immunized with a KLH conjugated synthetic peptide between 1-30 amino acids from the N-terminal region of human EIF4A1.
Formulation:	Purified polyclonal antibody supplied in PBS with 0.09% (W/V) sodium azide.
Purification:	This antibody is prepared by Saturated Ammonium Sulfate (SAS) precipitation followed by dialysis against PBS.
Conjugation:	Unconjugated
Storage:	Store at -20°C as received.
Stability:	Stable for 12 months from date of receipt.
Predicted Protein Size:	46154 Da
Gene Name:	eukaryotic translation initiation factor 4A1
Database Link:	<a href="#">NP_001407</a> <a href="#">Entrez Gene 13681 Mouse</a> <a href="#">Entrez Gene 106993879 Monkey</a> <a href="#">Entrez Gene 1973 Human</a> <a href="#">P60842</a>
Background:	EIF4A1 is an ATP-dependent RNA helicase which is a subunit of the eIF4F complex involved in cap recognition and is required for mRNA binding to ribosome. In the current model of translation initiation, eIF4A unwinds RNA secondary structures in the 5'-UTR of mRNAs which is necessary to allow efficient binding of the small ribosomal subunit, and subsequent scanning for the initiator codon.
Synonyms:	DDX2A; EIF-4A; eIF-4A-I; EIF4A; eIF4A-I



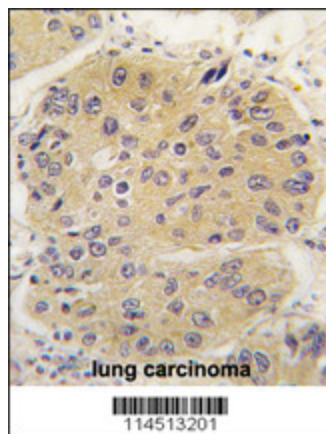
[View online »](#)

**Product images:**


Western blot analysis of anti-EIF4A1 Pab (Cat. # [TA302076]) in K562 cell line lysates (35ug/lane). EIF4A1 (arrow) was detected using the purified Pab.



Western blot analysis of EIF4A1 (arrow) using rabbit polyclonal EIF4A1 Antibody (N-term) (Cat.# [TA302076]). 293 cell lysates (2 ug/lane) either nontransfected (Lane 1) or transiently transfected with the EIF4A1 gene (Lane 2) (Origene Technologies).



Formalin-fixed and paraffin-embedded human lung carcinoma tissue reacted with EIF4A1 antibody (N-term) (Cat.#[TA302076]), which was peroxidase-conjugated to the secondary antibody, followed by DAB staining. This data demonstrates the use of this antibody for immunohistochemistry; clinical relevance has not been evaluated.