

## Product datasheet for **TA302073S**

### PDHX Rabbit Polyclonal Antibody

#### Product data:

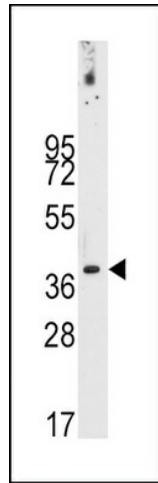
Product Type:	Primary Antibodies
Applications:	IF, IHC, WB
Recommended Dilution:	IF: 1:100, WB: 1:1000, IHC: 1:10~50
Reactivity:	Human (Predicted: Mouse, Rat)
Host:	Rabbit
Isotype:	Ig
Clonality:	Polyclonal
Immunogen:	This PDX1 antibody is generated from rabbits immunized with a KLH conjugated synthetic peptide between 1-30 amino acids from human PDX1.
Formulation:	Purified polyclonal antibody supplied in PBS with 0.09% (W/V) sodium azide.
Concentration:	lot specific
Purification:	This antibody is purified through a protein A column, followed by peptide affinity purification.
Conjugation:	Unconjugated
Storage:	Store at -20°C as received.
Stability:	Stable for 12 months from date of receipt.
Predicted Protein Size:	54122 Da
Gene Name:	pyruvate dehydrogenase complex component X
Database Link:	<a href="#">NP_003468</a> <a href="#">Entrez Gene 27402 Mouse</a> <a href="#">Entrez Gene 311254 Rat</a> <a href="#">Entrez Gene 8050 Human</a> <a href="#">O00330</a>
Background:	PDX1, located in the mitochondrial matrix, is required for anchoring dihydrolipoamide dehydrogenase (E3) to the dihydrolipoamide transacetylase (E2) core of the pyruvate dehydrogenase complexes of eukaryotes. This specific binding is essential for a functional PDH complex. Eukaryotic pyruvate dehydrogenase complexes are organized about a core consisting of the oligomeric dihydrolipoamide acetyl-transferase, around which are arranged multiple copies of pyruvate dehydrogenase, dihydrolipoamide dehydrogenase and protein X bound by noncovalent bonds. Defects in PDHX are a cause of lacticacidemia. PDX1 belongs to the 2-oxoacid dehydrogenase family and contains 1 lipoyl-binding domain.



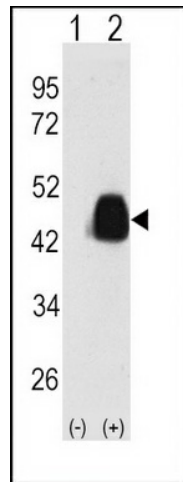
[View online »](#)

Synonyms: DLDBP; E3BP; OPDX; PDX1; proX

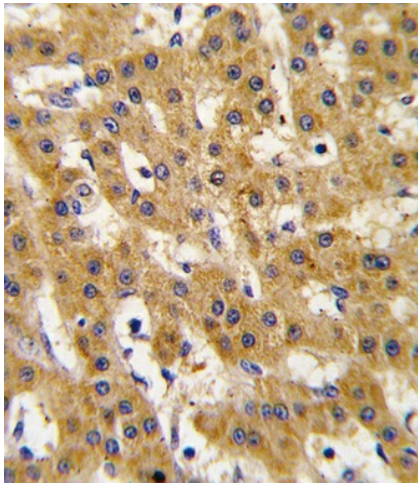
**Product images:**



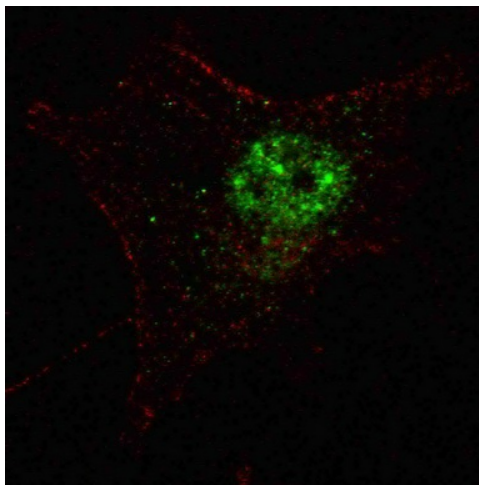
Western blot analysis of anti-PDX1 Antibody (T11) (Cat.#[TA302073]) in NCI-H460 cell line lysates (35ug/lane).PDX1-T11 (arrow) was detected using the purified Pab.



Western blot analysis of PDX1 (arrow) using PDX1 Antibody (T11) (Cat.#[TA302073]). 293 cell lysates (2 ug/lane) either nontransfected (Lane 1) or transiently transfected with the PDX1 gene (Lane 2) (Origene Technologies).



Formalin-fixed and paraffin-embedded human hepatocarcinoma tissue reacted with Phospho-PDX1-T11. ctrl antibody, which was peroxidase-conjugated to the secondary antibody, followed by DAB staining. This data demonstrates the use of this antibody for immunohistochemistry; clinical relevance has not been evaluated.



IF image of SY5Y cells stained with PDX1 (T11) antibody. SY5Y cells were incubated with [TA302073] PDX1 (T11) primary antibody (1:100, 2 h at RT). For secondary antibody, Alexa Fluor® 488 conjugated donkey anti-rabbit antibody (green) was used (1:1000, 1h). Nuclei were counterstained with Hoechst 33342 (blue). Note the highly specific localization of the PDX1 immunosignal to the nucleus, supported by Human Protein Atlas Data (<http://www.proteinatlas.org/ENSG00000110435>).