

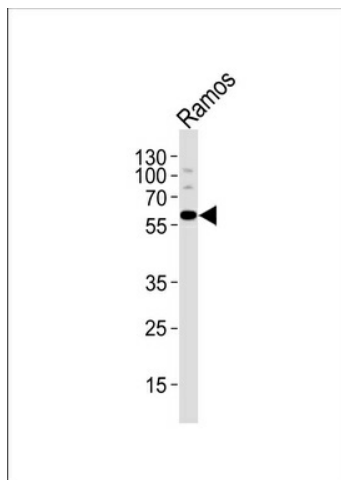
Product datasheet for **TA302071S**

CD19 Rabbit Polyclonal Antibody

Product data:

Product Type:	Primary Antibodies
Applications:	WB
Recommended Dilution:	WB: 1:1000
Reactivity:	Human
Host:	Rabbit
Isotype:	Ig
Clonality:	Polyclonal
Immunogen:	This CD19 antibody is generated from rabbits immunized with a KLH conjugated synthetic peptide between 393-421 amino acids from the C-terminal region of human CD19.
Formulation:	Purified polyclonal antibody supplied in PBS with 0.09% (W/V) sodium azide.
Purification:	This antibody is purified through a protein A column, followed by peptide affinity purification.
Conjugation:	Unconjugated
Storage:	Store at -20°C as received.
Stability:	Stable for 12 months from date of receipt.
Predicted Protein Size:	61128 Da
Gene Name:	CD19 molecule
Database Link:	NP_001761 Entrez Gene 930 Human P15391
Background:	Lymphocytes proliferate and differentiate in response to various concentrations of different antigens. The ability of the B cell to respond in a specific, yet sensitive manner to the various antigens is achieved with the use of low-affinity antigen receptors. CD19 is a cell surface molecule which assembles with the antigen receptor of B lymphocytes in order to decrease the threshold for antigen receptor-dependent stimulation.
Synonyms:	B4; CVID3
Protein Families:	Druggable Genome, Transmembrane
Protein Pathways:	B cell receptor signaling pathway, Hematopoietic cell lineage, Primary immunodeficiency


[View online »](#)

Product images:

CD19 Antibody (C-term) (Cat.# [TA302071])
western blot analysis in Ramos cell line lysates
(35ug/lane). This demonstrates the CD19 antibody
detected the CD19 protein (arrow).