

Product datasheet for **TA302066S**

TRAP alpha (SSR1) Rabbit Polyclonal Antibody

Product data:

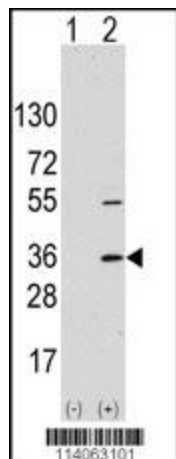
Product Type:	Primary Antibodies
Applications:	IHC, WB
Recommended Dilution:	IHC: 1:10~50, WB: 1:1000
Reactivity:	Human, Mouse (Predicted: Bovine)
Host:	Rabbit
Isotype:	Ig
Clonality:	Polyclonal
Immunogen:	This SSR1 antibody is generated from rabbits immunized with a KLH conjugated synthetic peptide between 17-46 amino acids from the N-terminal region of human SSR1.
Formulation:	Purified polyclonal antibody supplied in PBS with 0.09% (W/V) sodium azide.
Concentration:	lot specific
Purification:	This antibody is prepared by Saturated Ammonium Sulfate (SAS) precipitation followed by dialysis against PBS.
Conjugation:	Unconjugated
Storage:	Store at -20°C as received.
Stability:	Stable for 12 months from date of receipt.
Predicted Protein Size:	32235 Da
Gene Name:	signal sequence receptor subunit 1
Database Link:	NP_003135 Entrez Gene 107513 Mouse Entrez Gene 6745 Human P43307
Background:	The signal sequence receptor (SSR) is a glycosylated endoplasmic reticulum (ER) membrane receptor associated with protein translocation across the ER membrane. The SSR consists of 2 subunits, a 34-kD glycoprotein encoded by this gene and a 22-kD glycoprotein. This gene generates several mRNA species as a result of complex alternative polyadenylation. This gene is unusual in that it utilizes arrays of polyA signal sequences that are exclusively non-canonical.
Synonyms:	TRAPA



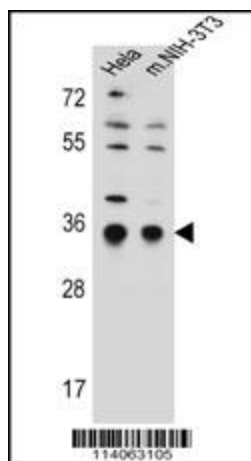
[View online »](#)

Protein Families: Druggable Genome, Transmembrane

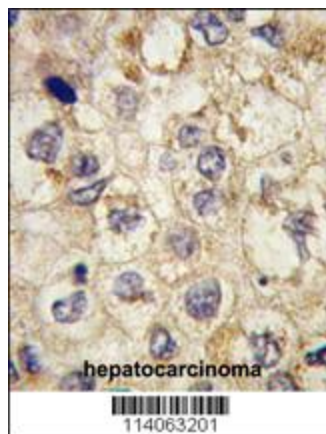
Product images:



Western blot analysis of SSR1 (arrow) using rabbit SSR1 Antibody (N-term). 293 cell lysates (2 ug/lane) either nontransfected (Lane 1) or transiently transfected with the SSR1 gene (Lane 2) (Origene Technologies).



SSR1 Antibody (N-term) (Cat. #[TA302066]) western blot analysis in HeLa, mouse NIH-3T3 cell line lysates (35ug/lane). This demonstrates the SSR1 antibody detected the SSR1 protein (arrow).



Formalin-fixed and paraffin-embedded human hepatocarcinoma tissue reacted with SSR1 antibody (N-term) (Cat.#[TA302066]), which was peroxidase-conjugated to the secondary antibody, followed by DAB staining. This data demonstrates the use of this antibody for immunohistochemistry; clinical relevance has not been evaluated.