

## Product datasheet for **TA302062**

### FGFR1 Rabbit Polyclonal Antibody

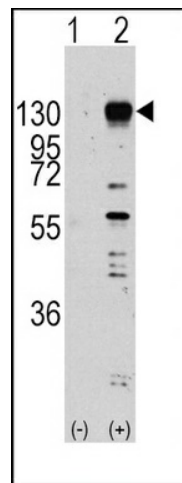
#### Product data:

Product Type:	Primary Antibodies
Applications:	WB
Recommended Dilution:	WB: 1:1000
Reactivity:	Human (Predicted: Mouse, Rat, Zebrafish, Chicken, Xenopus)
Host:	Rabbit
Isotype:	Ig
Clonality:	Polyclonal
Immunogen:	This FGFR1 antibody is generated from rabbits immunized with a KLH conjugated synthetic peptide between 631-660 amino acids from human FGFR1.
Formulation:	Purified polyclonal antibody supplied in PBS with 0.09% (W/V) sodium azide.
Purification:	This antibody is purified through a protein A column, followed by peptide affinity purification.
Conjugation:	Unconjugated
Storage:	Store at -20°C as received.
Stability:	Stable for 12 months from date of receipt.
Predicted Protein Size:	91867 Da
Gene Name:	fibroblast growth factor receptor 1
Database Link:	<a href="#">NP_075598</a> <a href="#">Entrez Gene 14182 Mouse</a> <a href="#">Entrez Gene 79114 Rat</a> <a href="#">Entrez Gene 2260 Human</a> <a href="#">P11362</a>



[View online »](#)

- Background:** FGFR1 is a member of the fibroblast growth factor receptor family, where amino acid sequence is highly conserved between members and throughout evolution. FGFR family members differ from one another in their ligand affinities and tissue distribution. A full-length representative protein consists of an extracellular region, composed of three immunoglobulin-like domains, a single hydrophobic membrane-spanning segment and a cytoplasmic tyrosine kinase domain. The extracellular portion of the protein interacts with fibroblast growth factors, setting in motion a cascade of downstream signals, ultimately influencing mitogenesis and differentiation. This particular family member binds both acidic and basic fibroblast growth factors and is involved in limb induction. Mutations in this gene can lead to Pfeiffer syndrome and Jackson-Weiss syndrome.
- Synonyms:** bFGF-R-1; BFGFR; CD331; CEK; ECCL; FGFBR; FGFR-1; FLG; FLT-2; FLT2; HBGFR; HH2; HRTFDS; KAL2; N-SAM
- Protein Families:** Druggable Genome, Protein Kinase, Transmembrane
- Protein Pathways:** Adherens junction, MAPK signaling pathway, Melanoma, Pathways in cancer, Prostate cancer, Regulation of actin cytoskeleton

**Product images:**

Western blot analysis of FGFR1 (arrow) using rabbit polyclonal FGFR1 Antibody (Y653) (RB11303). 293 cell lysates (2 ug/lane) either nontransfected (Lane 1) or transiently transfected with the FGFR1 gene (Lane 2) (Origene Technologies).