

Product datasheet for TA302056S

CLIC4 Rabbit Polyclonal Antibody

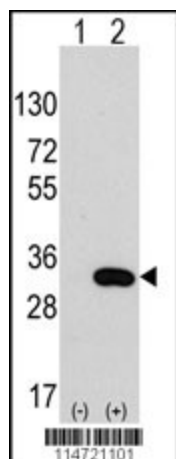
Product data:

Product Type:	Primary Antibodies
Applications:	IHC, WB
Recommended Dilution:	WB: 1:1000, IHC: 1:10~50
Reactivity:	Human
Host:	Rabbit
Isotype:	Ig
Clonality:	Polyclonal
Immunogen:	This CLIC4 antibody is generated from rabbits immunized with recombinant human CLIC4 protein.
Formulation:	Purified polyclonal antibody supplied in PBS with 0.09% (W/V) sodium azide.
Concentration:	lot specific
Purification:	This antibody is prepared by Saturated Ammonium Sulfate (SAS) precipitation followed by dialysis against PBS.
Conjugation:	Unconjugated
Storage:	Store at -20°C as received.
Stability:	Stable for 12 months from date of receipt.
Predicted Protein Size:	28772 Da
Gene Name:	chloride intracellular channel 4
Database Link:	NP_039234 Entrez Gene 25932 Human Q9Y696
Background:	Chloride channels are a diverse group of proteins that regulate fundamental cellular processes including stabilization of cell membrane potential, transepithelial transport, maintenance of intracellular pH, and regulation of cell volume. Chloride intracellular channel 4 (CLIC4) protein, encoded by the CLIC4 gene, is a member of the p64 family; the gene is expressed in many tissues and exhibits a intracellular vesicular pattern in Panc-1 cells (pancreatic cancer cells).
Synonyms:	CLIC4L; H1; huH1; MTCLIC; p64H1

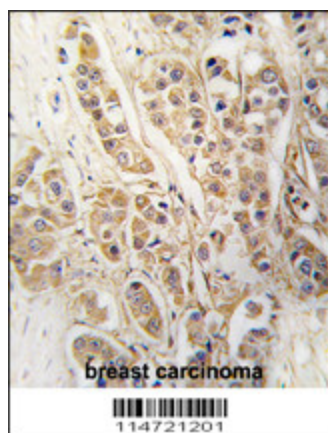

[View online »](#)

Protein Families: Druggable Genome, Ion Channels: Other

Product images:



Western blot analysis of CLIC4 (arrow) using rabbit polyclonal CLIC4 Antibody (Cat.# [TA302056]). 293 cell lysates (2 ug/lane) either nontransfected (Lane 1) or transiently transfected with the CLIC4 gene (Lane 2) (Origene Technologies).



Formalin-fixed and paraffin-embedded human breast carcinoma tissue reacted with CLIC4 antibody (Cat.#[TA302056]), which was peroxidase-conjugated to the secondary antibody, followed by DAB staining. This data demonstrates the use of this antibody for immunohistochemistry; clinical relevance has not been evaluated.