

Product datasheet for **TA302053S**

SAE1 Rabbit Polyclonal Antibody

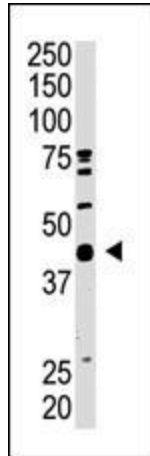
Product data:

Product Type:	Primary Antibodies
Applications:	IHC, WB
Recommended Dilution:	WB: 1:1000, IHC: 1:50~100
Reactivity:	Human, Mouse (Predicted: Rat, Bovine)
Host:	Rabbit
Isotype:	Ig
Clonality:	Polyclonal
Immunogen:	This SAE1 (AOS1) antibody is generated from rabbits immunized with a KLH conjugated synthetic peptide between 300-329 amino acids from the C-terminal region of human SAE1 (AOS1).
Formulation:	Purified polyclonal antibody supplied in PBS with 0.09% (W/V) sodium azide.
Concentration:	lot specific
Purification:	This antibody is purified through a protein A column, followed by peptide affinity purification.
Conjugation:	Unconjugated
Storage:	Store at -20°C as received.
Stability:	Stable for 12 months from date of receipt.
Predicted Protein Size:	38450 Da
Gene Name:	SUMO1 activating enzyme subunit 1
Database Link:	NP_005491 Entrez Gene 56459 Mouse Entrez Gene 308384 Rat Entrez Gene 10055 Human Q9UBE0
Background:	The dimeric enzyme AOS1 acts as a an E1 ligase for SUMO1, SUMO2, SUMO3, and probably SUMO4. It mediates ATP-dependent activation of SUMO proteins and formation of a thioester with a conserved cysteine residue on SAE2.
Synonyms:	AOS1; HSPC140; SUA1; UBLE1A
Protein Pathways:	Ubiquitin mediated proteolysis

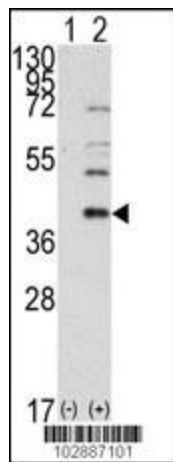


[View online »](#)

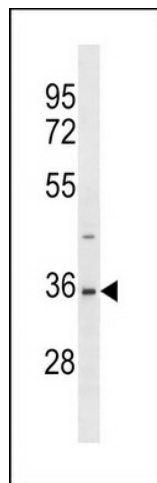
Product images:



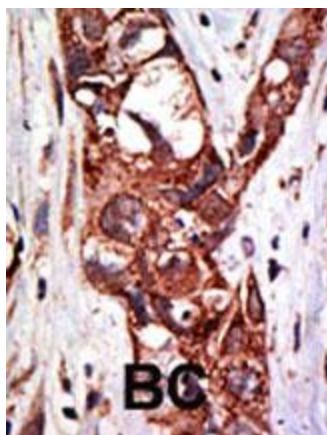
The AOS1 C-term Pab (Cat. #[TA302053]) is used in Western blot to detect AOS1 in mouse heart tissue lysate.



Western blot analysis of AOS1 (arrow) using rabbit polyclonal AOS1 Antibody (C-term) (Cat.# [TA302053]). 293 cell lysates (2 ug/lane) either nontransfected (Lane 1) or transiently transfected with the AOS1 gene (Lane 2) (Origene Technologies).



AOS1 Antibody (V315) (Cat. #[TA302053]) western blot analysis in 293 cell line lysates (35ug/lane). This demonstrates the AOS1 antibody detected the AOS1 protein (arrow).



Formalin-fixed and paraffin-embedded human cancer tissue reacted with the primary antibody, which was peroxidase-conjugated to the secondary antibody, followed by DAB staining. This data demonstrates the use of this antibody for immunohistochemistry; clinical relevance has not been evaluated. BC = breast carcinoma; HC = hepatocarcinoma.