

Product datasheet for **TA302045S**

c-Myc (MYC) Rabbit Polyclonal Antibody

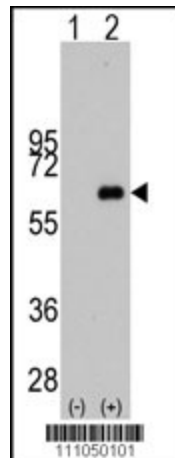
Product data:

Product Type:	Primary Antibodies
Applications:	WB
Recommended Dilution:	WB: 1:1000
Reactivity:	Human (Predicted: Mouse, Rat, Bovine)
Host:	Rabbit
Isotype:	Ig
Clonality:	Polyclonal
Immunogen:	This MYC antibody is generated from rabbits immunized with a KLH conjugated synthetic peptide between 351-380 amino acids from human MYC.
Formulation:	Purified polyclonal antibody supplied in PBS with 0.09% (W/V) sodium azide.
Concentration:	lot specific
Purification:	This antibody is purified through a protein A column, followed by peptide affinity purification.
Conjugation:	Unconjugated
Storage:	Store at -20°C as received.
Stability:	Stable for 12 months from date of receipt.
Predicted Protein Size:	48804 Da
Gene Name:	v-myc avian myelocytomatosis viral oncogene homolog
Database Link:	NP_002458 Entrez Gene 17869 Mouse Entrez Gene 24577 Rat Entrez Gene 4609 Human P01106



[View online »](#)

- Background:** MYC is a multifunctional, nuclear phosphoprotein that plays a role in cell cycle progression, apoptosis and cellular transformation. It functions as a transcription factor that regulates transcription of specific target genes. Mutations, overexpression, rearrangement and translocation of the gene encoding MYC have been associated with a variety of hematopoietic tumors, leukemias and lymphomas, including Burkitt lymphoma. There is evidence to show that alternative translation initiations from an upstream, in-frame non-AUG (CUG) and a downstream AUG start site result in the production of two isoforms with distinct N-termini. The synthesis of non-AUG initiated protein is suppressed in Burkitt's lymphomas, suggesting its importance in the normal function of this gene.
- Synonyms:** bHLHe39; c-Myc; MRTL; MYCC
- Protein Families:** Druggable Genome, Embryonic stem cells, Induced pluripotent stem cells, Stem cell - Pluripotency, Stem cell relevant signaling - JAK/STAT signaling pathway, Stem cell relevant signaling - TGFb/BMP signaling pathway, Stem cell relevant signaling - Wnt Signaling pathway, Transcription Factors
- Protein Pathways:** Acute myeloid leukemia, Bladder cancer, Cell cycle, Chronic myeloid leukemia, Colorectal cancer, Endometrial cancer, ErbB signaling pathway, Jak-STAT signaling pathway, MAPK signaling pathway, Pathways in cancer, Small cell lung cancer, TGF-beta signaling pathway, Thyroid cancer, Wnt signaling pathway

Product images:

Western blot analysis of MYC (arrow) using rabbit polyclonal MYC Antibody (S373) (Cat.# [TA302045]). 293 cell lysates (2 ug/lane) either nontransfected (Lane 1) or transiently transfected with the MYC gene (Lane 2) (Origene Technologies).