

Product datasheet for **TA302035**

ISG15 Rabbit Polyclonal Antibody

Product data:

Product Type:	Primary Antibodies
Applications:	WB
Recommended Dilution:	WB: 1:1000
Reactivity:	Human
Host:	Rabbit
Isotype:	Ig
Clonality:	Polyclonal
Immunogen:	This ISG15 antibody is generated from rabbits immunized with a KLH conjugated synthetic peptide between 72-99 amino acids from the Central region of human ISG15.
Formulation:	Purified polyclonal antibody supplied in PBS with 0.09% (W/V) sodium azide.
Concentration:	lot specific
Purification:	This antibody is prepared by Saturated Ammonium Sulfate (SAS) precipitation followed by dialysis against PBS.
Conjugation:	Unconjugated
Storage:	Store at -20°C as received.
Stability:	Stable for 12 months from date of receipt.
Predicted Protein Size:	17756 Da
Gene Name:	ISG15 ubiquitin-like modifier
Database Link:	NP_005092 Entrez Gene 9636 Human P05161



[View online »](#)

Background:

ISG15 is secreted from monocytes in response to type I interferons and causes natural killer (NK)-cell proliferation and an augmentation of non-MCH (major histocompatibility complex)-restricted cytotoxicity. Synthesis is stimulated by IFN-alpha or IFN-beta or IFN-omega, but not IFN-gamma. ISG15 expression is also induced by overexpression of interferon regulatory factors that participate in transcriptional regulation of IFN genes, and by influenza B virus. ISG15 is secreted also by cell lines of monocyte, T-lymphocyte, B-lymphocyte, human fibroblasts, and epithelial origins. The induction of terminal differentiation in human melanoma cells is associated with alterations in ISG15 expression. Enhancement of NK cell proliferation, augmentation of non-major histocompatibility complex-restricted cytotoxicity, and induction of IFN-gamma from T cells identify ISG15 as a member of the cytokine cascade and suggest that it may be responsible for amplifying and directing some of the immunomodulatory effects of IFN-alpha or IFN-beta. ISG15 has also been shown to function intracellularly as a ubiquitin homolog.

Synonyms:

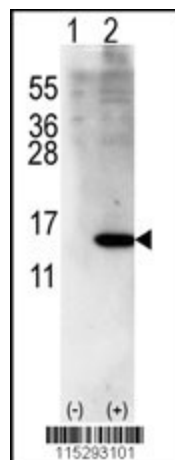
G1P2; hUCRP; IFI15; IMD38; IP17; UCRP

Protein Families:

Druggable Genome, Secreted Protein

Protein Pathways:

RIG-I-like receptor signaling pathway

Product images:

Western blot analysis of ISG15 (arrow) using rabbit polyclonal ISG15 Antibody (Center R87) (Cat.#TA302035). 293 cell lysates (2 ug/lane) either nontransfected (Lane 1) or transiently transfected with ISG15 gene (Lane 2) (Origene Technologies).