

Product datasheet for **TA302034S**

MCK10 (DDR1) Rabbit Polyclonal Antibody

Product data:

Product Type:	Primary Antibodies
Applications:	FC, IF, IHC, WB
Recommended Dilution:	WB: 1:1000, IHC: 1:10~50, IF: 1:10~50, FC: 1:10~50
Reactivity:	Human
Host:	Rabbit
Isotype:	Ig
Clonality:	Polyclonal
Immunogen:	This DDR1 antibody is generated from rabbits immunized with a KLH conjugated synthetic peptide between 299-330 amino acids from the Central region of human DDR1.
Formulation:	Purified polyclonal antibody supplied in PBS with 0.09% (W/V) sodium azide.
Concentration:	lot specific
Purification:	This antibody is prepared by Saturated Ammonium Sulfate (SAS) precipitation followed by dialysis against PBS.
Conjugation:	Unconjugated
Storage:	Store at -20°C as received.
Stability:	Stable for 12 months from date of receipt.
Predicted Protein Size:	101128 Da
Gene Name:	discoidin domain receptor tyrosine kinase 1
Database Link:	NP_001945 Entrez Gene 780 Human Q08345



[View online »](#)

Background:

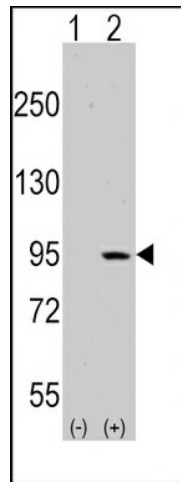
Receptor tyrosine kinases (RTKs) play a key role in the communication of cells with their microenvironment. These molecules are involved in the regulation of cell growth, differentiation and metabolism. DDR1 is an RTK that is widely expressed in normal and transformed epithelial cells and is activated by various types of collagen. It belongs to a subfamily of tyrosine kinase receptors with a homology region to the Dictyostelium discoideum protein discoidin I in their extracellular domain. Its autophosphorylation is achieved by all collagens so far tested (type I to type VI). In situ studies and Northern-blot analysis show that expression of DDR1 is restricted to epithelial cells, particularly in the kidney, lung, gastrointestinal tract, and brain. In addition, it is significantly over-expressed in several human tumors from breast, ovarian, esophageal, and pediatric brain.

Synonyms:

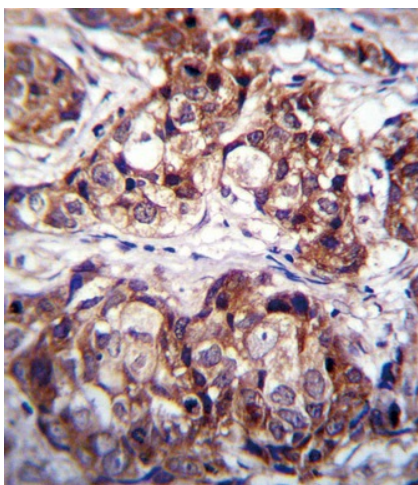
CAK; CD167; DDR; EDDR1; HGK2; MCK10; NEP; NTRK4; PTK3; PTK3A; RTK6; TRKE

Protein Families:

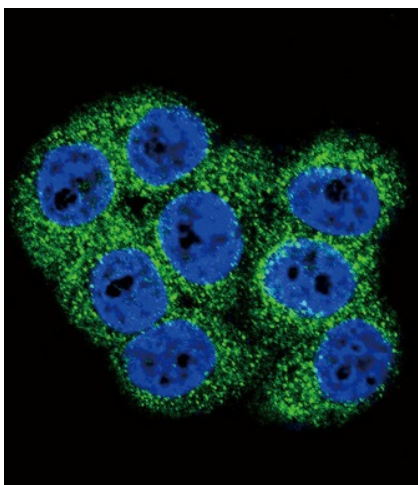
Druggable Genome, Protein Kinase, Transmembrane

Product images:

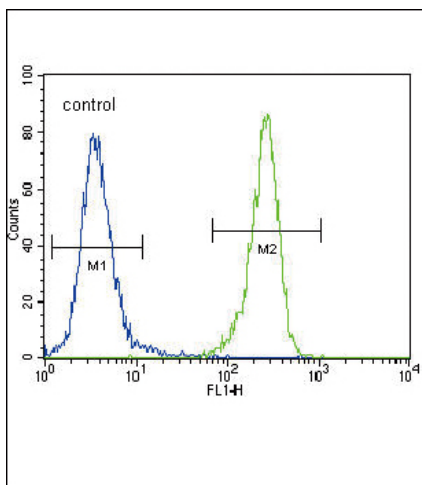
Western blot analysis of DDR1 (arrow) using rabbit polyclonal DDR1 Antibody (Center) (Cat.# [TA302034]).293 cell lysates (2 ug/lane) either nontransfected (Lane 1) or transiently transfected with the DDR1 gene (Lane 2) (Origene Technologies).



DDR1 Antibody (Center) (Cat. # [TA302034]) immunohistochemistry analysis in formalin fixed and paraffin embedded human breast carcinoma followed by peroxidase conjugation of the secondary antibody and DAB staining. This data demonstrates the use of DDR1 Antibody (Center) for immunohistochemistry. Clinical relevance has not been evaluated.



Confocal immunofluorescent analysis of DDR1 Antibody (Center) (Cat#[TA302034]) with 293 cell followed by Alexa Fluor 488-conjugated goat anti-rabbit IgG (green). DAPI was used to stain the cell nuclear (blue).



DDR1 Antibody (Center) (Cat. # [TA302034]) flow cytometric analysis of 293 cells (right histogram) compared to a negative control cell (left histogram). FITC-conjugated goat-anti-rabbit secondary antibodies were used for the analysis.