

Product datasheet for **TA302026S**

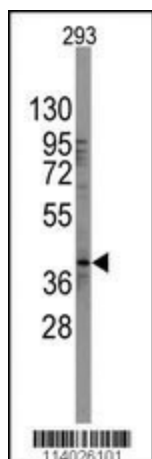
SOX2 Rabbit Polyclonal Antibody

Product data:

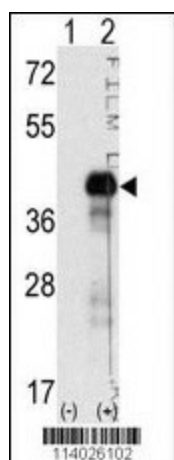
Product Type:	Primary Antibodies
Applications:	FC, IF, IHC, WB
Recommended Dilution:	WB: 1:1000, IHC: 1:10~50, IF: 1:10~50, FC: 1:10~50
Reactivity:	Human (Predicted: Mouse, Zebrafish, Chicken, Xenopus)
Host:	Rabbit
Isotype:	Ig
Clonality:	Polyclonal
Immunogen:	This SOX2 antibody is generated from rabbits immunized with a KLH conjugated synthetic peptide between 89-119 amino acids from the N-terminal region of human SOX2.
Formulation:	Purified polyclonal antibody supplied in PBS with 0.09% (W/V) sodium azide.
Purification:	This antibody is prepared by Saturated Ammonium Sulfate (SAS) precipitation followed by dialysis against PBS.
Conjugation:	Unconjugated
Storage:	Store at -20°C as received.
Stability:	Stable for 12 months from date of receipt.
Predicted Protein Size:	34310 Da
Gene Name:	SRY-box 2
Database Link:	NP_003097 Entrez Gene 20674 Mouse Entrez Gene 6657 Human P48431
Background:	The intronless gene for SOX2 encodes a member of the SRY-related HMG-box (SOX) family of transcription factors involved in the regulation of embryonic development and in the determination of cell fate. The encoded protein may act as a transcriptional activator after forming a protein complex with other proteins. Mutations in the SOX2 gene have been associated with bilateral anophthalmia, a severe form of structural eye malformation.
Synonyms:	ANOP3; MCOPS3
Protein Families:	Adult stem cells, Cancer stem cells, Embryonic stem cells, ES Cell Differentiation/IPS, Induced pluripotent stem cells, Transcription Factors


[View online »](#)

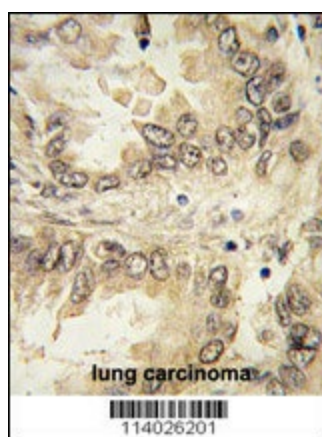
Product images:



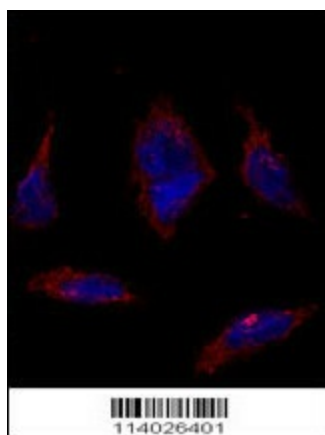
Western blot analysis of SOX2 Antibody (N-term) in 293 cell line lysates (35ug/lane). SOX2 (arrow) was detected using the purified Pab.



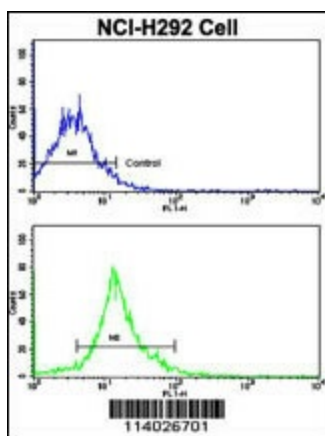
Western blot analysis of SOX2 (arrow) using rabbit polyclonal SOX2 Antibody (N-term) (Cat.# [TA302026]). 293 cell lysates (2 ug/lane) either nontransfected (Lane 1) or transiently transfected with the SOX2 gene (Lane 2) (Origene Technologies).



Formalin-fixed and paraffin-embedded human lung carcinoma tissue reacted with SOX2 antibody (N-term) (Cat.#[TA302026]), which was peroxidase-conjugated to the secondary antibody, followed by DAB staining. This data demonstrates the use of this antibody for immunohistochemistry; clinical relevance has not been evaluated.



Immunofluorescence analysis of SOX2 Antibody (N-term) (Cat.#[TA302026]) in HeLa cells. 0.025 mg/ml primary antibody was followed by Alexa-Fluor-546-conjugated donkey anti-rabbit IgG (H+L). Alexa-Fluor-546 emits orange fluorescence. Blue counterstaining is DAPI.



Flow cytometric analysis of NCI-H292 cells using SOX2 Antibody (N-term) (bottom histogram) compared to a negative control cell (top histogram). FITC-conjugated goat-anti-rabbit secondary antibodies were used for the analysis.