

Product datasheet for TA302019

P70 S6 Kinase beta (RPS6KB2) Rabbit Polyclonal Antibody

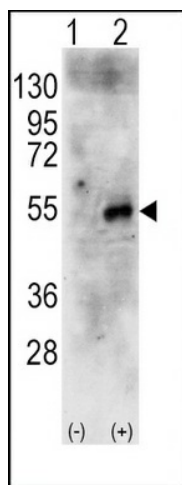
Product data:

Product Type:	Primary Antibodies
Applications:	WB
Recommended Dilution:	WB: 1:1000
Reactivity:	Human, Rat
Host:	Rabbit
Isotype:	Ig
Clonality:	Polyclonal
Immunogen:	This RPS6KB2 antibody is generated from rabbits immunized with a KLH conjugated synthetic peptide between 243-272 amino acids from the Central region of human RPS6KB2.
Formulation:	Purified polyclonal antibody supplied in PBS with 0.09% (W/V) sodium azide.
Concentration:	lot specific
Purification:	This antibody is prepared by Saturated Ammonium Sulfate (SAS) precipitation followed by dialysis against PBS.
Conjugation:	Unconjugated
Storage:	Store at -20°C as received.
Stability:	Stable for 12 months from date of receipt.
Predicted Protein Size:	53483 Da
Gene Name:	ribosomal protein S6 kinase B2
Database Link:	NP_003943 Entrez Gene 361696 Rat Entrez Gene 6199 Human Q9UBS0
Background:	RPS6KB2 is a member of the RSK (ribosomal S6 kinase) family of serine/threonine kinases. This kinase contains 2 nonidentical kinase catalytic domains and phosphorylates the S6 ribosomal protein and eucaryotic translation initiation factor 4B. Phosphorylation of S6 leads to an increase in protein synthesis and cell proliferation.
Synonyms:	KLS; p70(S6K)-beta; P70-beta; P70-beta-1; P70-beta-2; p70S6Kb; S6K-beta2; S6K2; SRK; STK14B
Protein Families:	Druggable Genome, Protein Kinase


[View online »](#)

Protein Pathways: Acute myeloid leukemia, ErbB signaling pathway, Fc gamma R-mediated phagocytosis, Insulin signaling pathway, mTOR signaling pathway, TGF-beta signaling pathway

Product images:



Western blot analysis of RPS6KB2 (arrow) using rabbit polyclonal RPS6KB2 Antibody (Center) (RB11689). 293 cell lysates (2 ug/lane) either nontransfected (Lane 1) or transiently transfected with the human RPS6KB2 gene (Lane 2) (Origene Technologies).