

Product datasheet for **TA302016S**

ALDH2 Rabbit Polyclonal Antibody

Product data:

Product Type:	Primary Antibodies
Applications:	IHC, WB
Recommended Dilution:	WB: 1:1000, IHC: 1:10~50
Reactivity:	Human (Predicted: Mouse, Rat)
Host:	Rabbit
Isotype:	Ig
Clonality:	Polyclonal
Immunogen:	This ALDH2 antibody is generated from rabbits immunized with a KLH conjugated synthetic peptide between 318-347 amino acids from the Central region of human ALDH2.
Formulation:	Purified polyclonal antibody supplied in PBS with 0.09% (W/V) sodium azide.
Purification:	This antibody is purified through a protein A column, followed by peptide affinity purification.
Conjugation:	Unconjugated
Storage:	Store at -20°C as received.
Stability:	Stable for 12 months from date of receipt.
Predicted Protein Size:	56381 Da
Gene Name:	aldehyde dehydrogenase 2 family (mitochondrial)
Database Link:	NP_000681 Entrez Gene 11669 Mouse Entrez Gene 29539 Rat Entrez Gene 217 Human P05091
Background:	ALDH2 belongs to the aldehyde dehydrogenase family of proteins. Aldehyde dehydrogenase is the second enzyme of the major oxidative pathway of alcohol metabolism. Two major liver isoforms of this enzyme, cytosolic and mitochondrial, can be distinguished by their electrophoretic mobilities, kinetic properties, and subcellular localizations. Most Caucasians have two major isozymes, while approximately 50% of Asians have only the cytosolic isozyme, missing the mitochondrial isozyme. A remarkably higher frequency of acute alcohol intoxication among Asians than among Caucasians could be related to the absence of the mitochondrial isozyme.
Synonyms:	ALDH-E2; ALDHI; ALDM

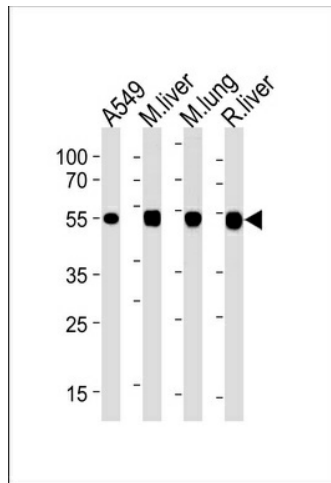


[View online »](#)

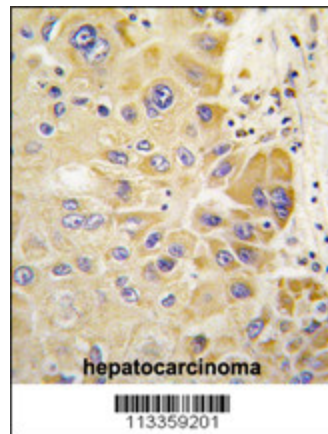
Protein Families: Druggable Genome

Protein Pathways: Arginine and proline metabolism, Ascorbate and aldarate metabolism, beta-Alanine metabolism, Butanoate metabolism, Fatty acid metabolism, Glycerolipid metabolism, Glycolysis / Gluconeogenesis, Histidine metabolism, Limonene and pinene degradation, Lysine degradation, Metabolic pathways, Propanoate metabolism, Pyruvate metabolism, Tryptophan metabolism, Valine, leucine and isoleucine degradation

Product images:



ALDH2 Antibody (Center) (Cat.# [TA302016]) western blot analysis in A549 cell line, mouse liver and lung, rat liver lysates (35ug/lane). This demonstrates the ALDH2 antibody detected the ALDH2 protein (arrow).



Formalin-fixed and paraffin-embedded human hepatocarcinoma tissue reacted with ALDH2 antibody (Center) (Cat.#[TA302016]), which was peroxidase-conjugated to the secondary antibody, followed by DAB staining. This data demonstrates the use of this antibody for immunohistochemistry; clinical relevance has not been evaluated.