

Product datasheet for **TA302015S**

CDK1 Rabbit Polyclonal Antibody

Product data:

Product Type:	Primary Antibodies
Applications:	FC, WB
Recommended Dilution:	WB: 1:1000, FC: 1:10~50
Reactivity:	Human (Predicted: Bovine, Chicken)
Host:	Rabbit
Isotype:	Ig
Clonality:	Polyclonal
Immunogen:	This CDC2 antibody is generated from rabbits immunized with a KLH conjugated synthetic peptide between 1-29 amino acids from the N-terminal region of human CDC2.
Formulation:	Purified polyclonal antibody supplied in PBS with 0.09% (W/V) sodium azide.
Concentration:	lot specific
Purification:	This antibody is purified through a protein A column, followed by peptide affinity purification.
Conjugation:	Unconjugated
Storage:	Store at -20°C as received.
Stability:	Stable for 12 months from date of receipt.
Predicted Protein Size:	34095 Da
Gene Name:	cyclin-dependent kinase 1
Database Link:	NP_001777 Entrez Gene 983 Human P06493
Background:	CDC2 is a member of the Ser/Thr protein kinase family. This protein is a catalytic subunit of the highly conserved protein kinase complex known as M-phase promoting factor (MPF), which is essential for G1/S and G2/M phase transitions of eukaryotic cell cycle. Mitotic cyclins stably associate with this protein and function as regulatory subunits. The kinase activity of this protein is controlled by cyclin accumulation and destruction through the cell cycle. The phosphorylation and dephosphorylation of this protein also play important regulatory roles in cell cycle control.
Synonyms:	CDC2; CDC28A; P34CDC2

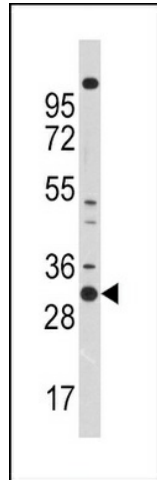


[View online »](#)

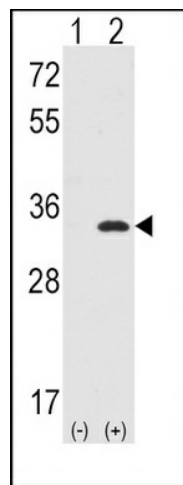
Protein Families: Druggable Genome, Protein Kinase, Stem cell - Pluripotency

Protein Pathways: Cell cycle, Gap junction, Oocyte meiosis, p53 signaling pathway, Progesterone-mediated oocyte maturation

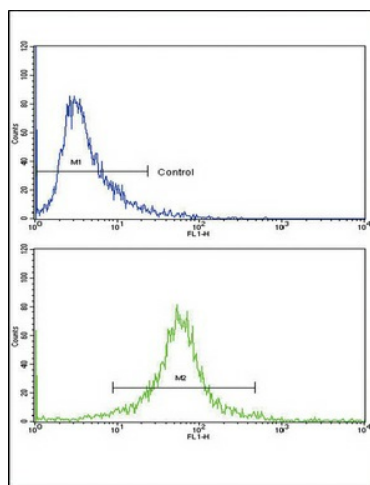
Product images:



Western blot analysis of CDC2 Antibody (N-term) in 293 cell line lysates (35ug/lane). CDC2 (arrow) was detected using the purified Pab.



Western blot analysis of CDC2 (arrow) using rabbit polyclonal CDC2 Antibody (N-term) (Cat.# [TA302015]).293 cell lysates (2 ug/lane) either nontransfected (Lane 1) or transiently transfected with the CDC2 gene (Lane 2) (Origene Technologies).



Flow cytometric analysis of 293 cells using CDC2 Antibody (N-term) (bottom histogram) compared to a negative control cell (top histogram). FITC-conjugated goat-anti-rabbit secondary antibodies were used for the analysis.