

## Product datasheet for **TA302013S**

### CDK1 Rabbit Polyclonal Antibody

#### Product data:

Product Type:	Primary Antibodies
Applications:	IHC, WB
Recommended Dilution:	WB: 1:1000, IHC: 1:10~50
Reactivity:	Human (Predicted: Mouse, Rat, Bovine, Chicken, Drosophila, Xenopus)
Host:	Rabbit
Isotype:	Ig
Clonality:	Polyclonal
Immunogen:	This CDK1 antibody is generated from rabbits immunized with a KLH conjugated synthetic peptide between 1-30 amino acids from human CDK1.
Formulation:	Purified polyclonal antibody supplied in PBS with 0.09% (W/V) sodium azide.
Concentration:	lot specific
Purification:	This antibody is purified through a protein A column, followed by peptide affinity purification.
Conjugation:	Unconjugated
Storage:	Store at -20°C as received.
Stability:	Stable for 12 months from date of receipt.
Predicted Protein Size:	34095 Da
Gene Name:	cyclin-dependent kinase 1
Database Link:	<a href="#">NP_001777</a> <a href="#">Entrez Gene 12534 Mouse</a> <a href="#">Entrez Gene 54237 Rat</a> <a href="#">Entrez Gene 983 Human</a> <a href="#">P06493</a>
Background:	CDK1 is a member of the Ser/Thr protein kinase family. This protein is a catalytic subunit of the highly conserved protein kinase complex known as M-phase promoting factor (MPF), which is essential for G1/S and G2/M phase transitions of eukaryotic cell cycle. Mitotic cyclins stably associate with this protein and function as regulatory subunits. The kinase activity of this protein is controlled by cyclin accumulation and destruction through the cell cycle. The phosphorylation and dephosphorylation of this protein also play important regulatory roles in cell cycle control.
Synonyms:	CDC2; CDC28A; P34CDC2

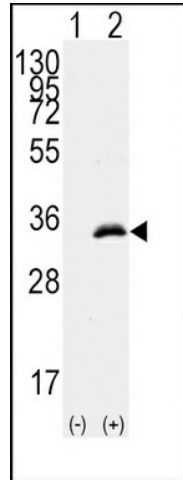


[View online »](#)

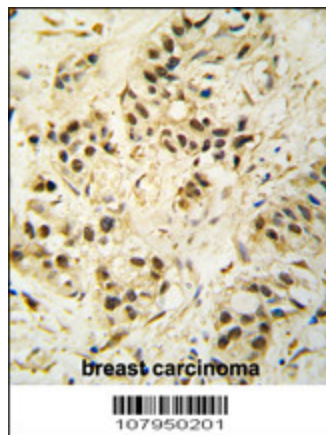
**Protein Families:** Druggable Genome, Protein Kinase, Stem cell - Pluripotency

**Protein Pathways:** Cell cycle, Gap junction, Oocyte meiosis, p53 signaling pathway, Progesterone-mediated oocyte maturation

**Product images:**



Western blot analysis of CDK1 (arrow) using rabbit polyclonal CDK1 Antibody (T14) (Cat.# [TA302013]). 293 cell lysates (2 ug/lane) either nontransfected (Lane 1) or transiently transfected with the CDK1 gene (Lane 2) (Origene Technologies).



Formalin-fixed and paraffin-embedded human breast carcinoma tissue reacted with CDK1 Antibody (T14) (Cat.#[TA302013]), which was peroxidase-conjugated to the secondary antibody, followed by DAB staining. This data demonstrates the use of this antibody for immunohistochemistry; clinical relevance has not been evaluated.