

Product datasheet for **TA302011S**

GRB2 Rabbit Polyclonal Antibody

Product data:

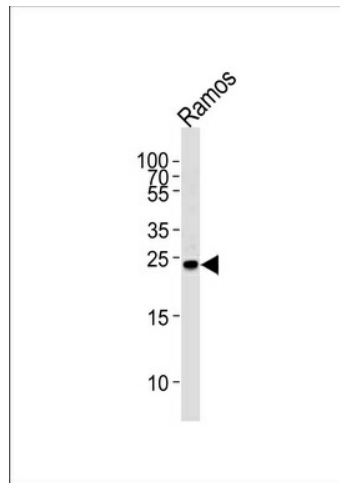
Product Type:	Primary Antibodies
Applications:	IHC, WB
Recommended Dilution:	WB: 1:1000, IHC: 1:10~50
Reactivity:	Human (Predicted: Mouse, Rat, Chicken, Xenopus)
Host:	Rabbit
Isotype:	Ig
Clonality:	Polyclonal
Immunogen:	This GRB2 antibody is generated from rabbits immunized with a KLH conjugated synthetic peptide between 187-216 amino acids from human GRB2.
Formulation:	Purified polyclonal antibody supplied in PBS with 0.09% (W/V) sodium azide.
Concentration:	lot specific
Purification:	This antibody is purified through a protein A column, followed by peptide affinity purification.
Conjugation:	Unconjugated
Storage:	Store at -20°C as received.
Stability:	Stable for 12 months from date of receipt.
Predicted Protein Size:	25206 Da
Gene Name:	growth factor receptor bound protein 2
Database Link:	NP_002077 Entrez Gene 14784 Mouse Entrez Gene 81504 Rat Entrez Gene 2885 Human P62993
Background:	GRB2 binds the epidermal growth factor receptor and contains one SH2 domain and two SH3 domains. Its two SH3 domains direct complex formation with proline-rich regions of other proteins, and its SH2 domain binds tyrosine phosphorylated sequences. This gene is similar to the Sem5 gene of C.elegans, which is involved in the signal transduction pathway.
Synonyms:	ASH; EGFRBP-GRB2; Grb3-3; MST084; MSTP084; NCKAP2
Protein Families:	Druggable Genome



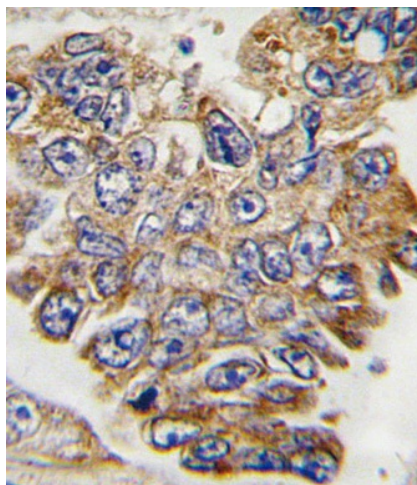
[View online »](#)

Protein Pathways:

Acute myeloid leukemia, B cell receptor signaling pathway, Chemokine signaling pathway, Chronic myeloid leukemia, Colorectal cancer, Dorso-ventral axis formation, Endometrial cancer, ErbB signaling pathway, Fc epsilon RI signaling pathway, Focal adhesion, Gap junction, Glioma, GnRH signaling pathway, Insulin signaling pathway, Jak-STAT signaling pathway, MAPK signaling pathway, Natural killer cell mediated cytotoxicity, Neurotrophin signaling pathway, Non-small cell lung cancer, Pathways in cancer, Prostate cancer, Renal cell carcinoma, T cell receptor signaling pathway

Product images:

Western blot analysis of lysate from Ramos cell line, using GRB2 Antibody (pY209) (Cat. # [TA302011]). [TA302011] was diluted at 1:1000. A goat anti-rabbit IgG H&L (HRP) at 1:5000 dilution was used as the secondary antibody. Lysate at 35ug.



Formalin-fixed and paraffin-embedded human lung carcinoma tissue reacted with GRB2 Antibody (Y209), which was peroxidase-conjugated to the secondary antibody, followed by DAB staining. This data demonstrates the use of this antibody for immunohistochemistry; clinical relevance has not been evaluated.