

Product datasheet for **TA302010**

Apolipoprotein E (APOE) Rabbit Polyclonal Antibody

Product data:

Product Type:	Primary Antibodies
Applications:	IHC, WB
Recommended Dilution:	WB: 1:1000, IHC: 1:10~50
Reactivity:	Human (Predicted: Monkey, Rabbit)
Host:	Rabbit
Isotype:	Ig
Clonality:	Polyclonal
Immunogen:	This APOE antibody is generated from rabbits immunized with a KLH conjugated synthetic peptide between 263-292 amino acids from the C-terminal region of human APOE.
Formulation:	Purified polyclonal antibody supplied in PBS with 0.09% (W/V) sodium azide.
Concentration:	lot specific
Purification:	This antibody is prepared by Saturated Ammonium Sulfate (SAS) precipitation followed by dialysis against PBS.
Conjugation:	Unconjugated
Storage:	Store at -20°C as received.
Stability:	Stable for 12 months from date of receipt.
Predicted Protein Size:	36154 Da
Gene Name:	apolipoprotein E
Database Link:	NP_000032 Entrez Gene 714623 Monkey Entrez Gene 348 Human P02649



[View online »](#)

Background:

Chylomicron remnants and very low density lipoprotein (VLDL) remnants are rapidly removed from the circulation by receptor-mediated endocytosis in the liver. Apolipoprotein E, a main apoprotein of the chylomicron, binds to a specific receptor on liver cells and peripheral cells. ApoE is essential for the normal catabolism of triglyceride-rich lipoprotein constituents. The APOE gene is mapped to chromosome 19 in a cluster with APOC1 and APOC2. Defects in apolipoprotein E result in familial dysbetalipoproteinemia, or type III hyperlipoproteinemia (HLP III), in which increased plasma cholesterol and triglycerides are the consequence of impaired clearance of chylomicron and VLDL remnants.

Synonyms:

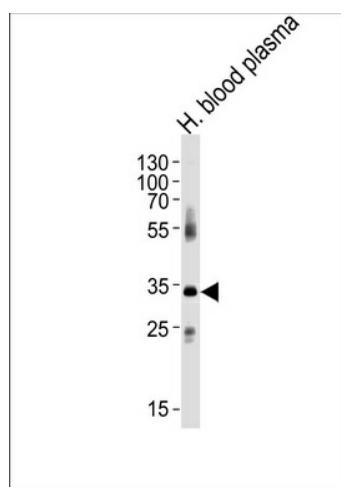
AD2; APO-E; LDLCQ5; LPG

Protein Families:

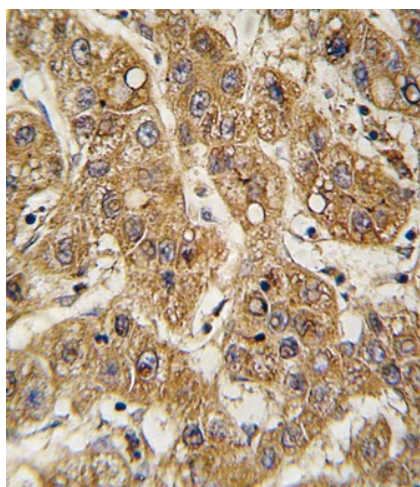
Adult stem cells, Druggable Genome, Secreted Protein, Stem cell - Pluripotency

Protein Pathways:

Alzheimer's disease

Product images:

Western blot analysis of lysate from human blood plasma tissue lysate, using APOE Antibody (C-term) (Cat. #TA302010). TA302010 was diluted at 1:1000 at each lane. A goat anti-rabbit IgG H&L (HRP) at 1:5000 dilution was used as the secondary antibody. Lysate at 35ug per lane.



Formalin-fixed and paraffin-embedded human hepatocarcinoma tissue reacted with APOE antibody (C-term) (Cat.#TA302010), which was peroxidase-conjugated to the secondary antibody, followed by DAB staining. This data demonstrates the use of this antibody for immunohistochemistry; clinical relevance has not been evaluated.