

Product datasheet for **TA302009S**

ENT1 (SLC29A1) Rabbit Polyclonal Antibody

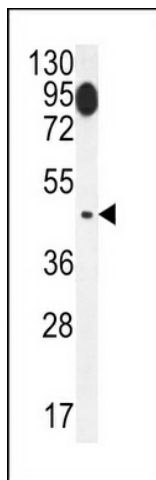
Product data:

Product Type:	Primary Antibodies
Applications:	WB
Recommended Dilution:	WB: 1:1000
Reactivity:	Human, Mouse (Predicted: Rat)
Host:	Rabbit
Isotype:	Ig
Clonality:	Polyclonal
Immunogen:	This ENT1 antibody is generated from rabbits immunized with a KLH conjugated synthetic peptide between 234-263 amino acids from the Central region of human ENT1.
Formulation:	Purified polyclonal antibody supplied in PBS with 0.09% (W/V) sodium azide.
Purification:	This antibody is purified through a protein A column, followed by peptide affinity purification.
Conjugation:	Unconjugated
Storage:	Store at -20°C as received.
Stability:	Stable for 12 months from date of receipt.
Predicted Protein Size:	50219 Da
Gene Name:	solute carrier family 29 member 1 (Augustine blood group)
Database Link:	NP_004946 Entrez Gene 63959 Mouse Entrez Gene 63997 Rat Entrez Gene 2030 Human Q99808
Background:	ENT1 is a member of the equilibrative nucleoside transporter family. It is a transmembrane glycoprotein that localizes to the plasma and mitochondrial membranes and mediates the cellular uptake of nucleosides from the surrounding medium. The protein is categorized as an equilibrative (as opposed to concentrative) transporter that is sensitive to inhibition by nitrobenzylthioinosine (NBMPR). Nucleoside transporters are required for nucleotide synthesis in cells that lack de novo nucleoside synthesis pathways, and are also necessary for the uptake of cytotoxic nucleosides used for cancer and viral chemotherapies.
Synonyms:	ENT1
Protein Families:	Transmembrane

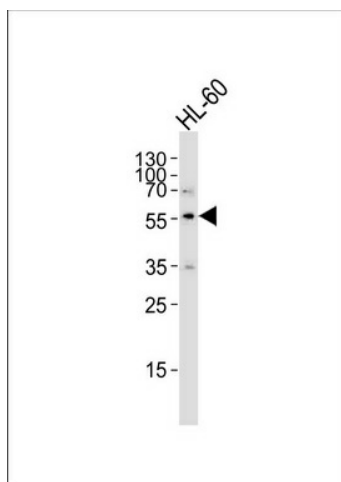


[View online »](#)

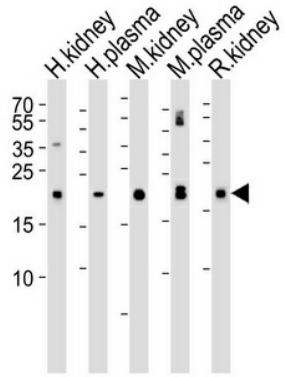
Product images:



ENT1 (Slc29a1) (Center) (Cat.#[TA302009]) western blot analysis in mouse brain tissue lysates (35ug/lane). This demonstrates the ENT1 antibody detected ENT1 protein (arrow).



Western blot analysis of lysate from HL-60 cell line, using ENT1 (Slc29a1) Antibody (Center) (Cat. #[TA302009]). [TA302009] was diluted at 1:1000. A goat anti-rabbit IgG H&L (HRP) at 1:5000 dilution was used as the secondary antibody. Lysate at 35ug.



Western blot analysis of lysates from human kidney, plasma, mouse kidney, plasma and rat kidney tissue lysate (from left to right), using GPX3 Antibody (Center) (Cat. #TA302009). [TA302009] was diluted at 1:1000 at each lane. A goat anti-rabbit IgG H&L (HRP) at 1:5000 dilution was used as the secondary antibody. Lysates at 35ug per lane.